



PURCHASE ORDER (ORDERS) MESSAGE FOR HUNGARY

BASIC STANDARD:
EANCOM[®] - 2002.
PURCHASE ORDER MESSAGE
UN/EDIFACT D.01B
Version: 010

Created by:
GS1 Hungary

Release: 1 Oct 2008
Version: 1.0



CONTENT

CONTENT	2
DEFINITION.....	3
PRINCIPLES	3
CORE ATTRIBUTES	3
MESSAGE STRUCTURE CHART.....	6
BRANCHING DIAGRAM	8
SEGMENTS DESCRIPTION.....	12
SEGMENT CONTENT DESCRIPTIONS.....	18
Segments of header section	19
Segments of detail section.....	46
Segments of summary section.....	72
EXAMPLES	76

Definition

A message specifying details for goods or services ordered under conditions agreed between the seller and the buyer.

Principles

The EANCOM® subset of the UNSM Purchase Order is intended to be used in day to day ordering transactions.

The recommended business practice is that one Purchase Order is placed for one delivery in one location at one time.

It is however possible to request deliveries in several locations, by using Segment Group 37 (LOC-QTY-DTM) in the detail section. Deliveries of this nature are termed split deliveries. Using the DTM (Date and Time) segment in the detail section makes it possible to request deliveries on different dates within the same purchase order. Split deliveries may also take place to the same location on different dates over a period of time.

The Purchase Order message can be used to send blanket orders followed at a later date by a series of call-offs (both message types can be identified precisely in the BGM segment with the appropriate coded identifier). The blanket order specifies a global product quantity per line item to be ordered over a period of time. The subsequent call-offs referring to the blanket order will request a part of the global quantity with specific delivery dates and locations.

The Purchase Order message can also be used to send rush orders i.e. orders requesting the immediate availability of goods, using the appropriate coded identifier in the BGM segment.

Core Attributes

The following data are regarded to be the “core” attributes of any “normal” European EANCOM® ORDERS message. I.e. these are the data that will minimally be part of any normal ORDERS message within Europe. (R = Required; O = Optional)

Business term	Seg	Status	DE	Codes, Values
Order type	BGM	R	1001	220
Order number	BGM	R	1004	Value
Order function	BGM	R	1225	9
Order date/time	DTM	R	2005 2380 2379	137 Value 102 203

Delivery date/time requested	DTM	R	2005 2380 2379	2 Value 102 203 718
Contract reference	RFF	O	1153 1154	CT Value
Price list reference	RFF	O	1153 1154	PL Value
Buyer's GLN	NAD	R	3035 3039 3055	BY Value 9
Supplier's GLN	NAD	R	3035 3039 3055	SU Value 9
Delivery's party GLN	NAD	R	3035 3039 3055	DP Value (GLN) 9
Ordered item	LIN	R	7140 7143	Value (GTIN) SRV
Ordered quantity	QTY	R	6063 6060 6411	21 Value See codes list



1 Oct 2008

IMPORTANT REMARK !

As in every other EANCOM[®] message, proper preliminary Data Alignment is assumed to have been carried out. Anything else would go against GS1's (and thus EANCOM[®]'s) philosophy of efficiency.

As a consequence:

- Goods/services ordered must be identified by a GTIN;
- All parties must be identified by a GLN.

Message Structure Chart

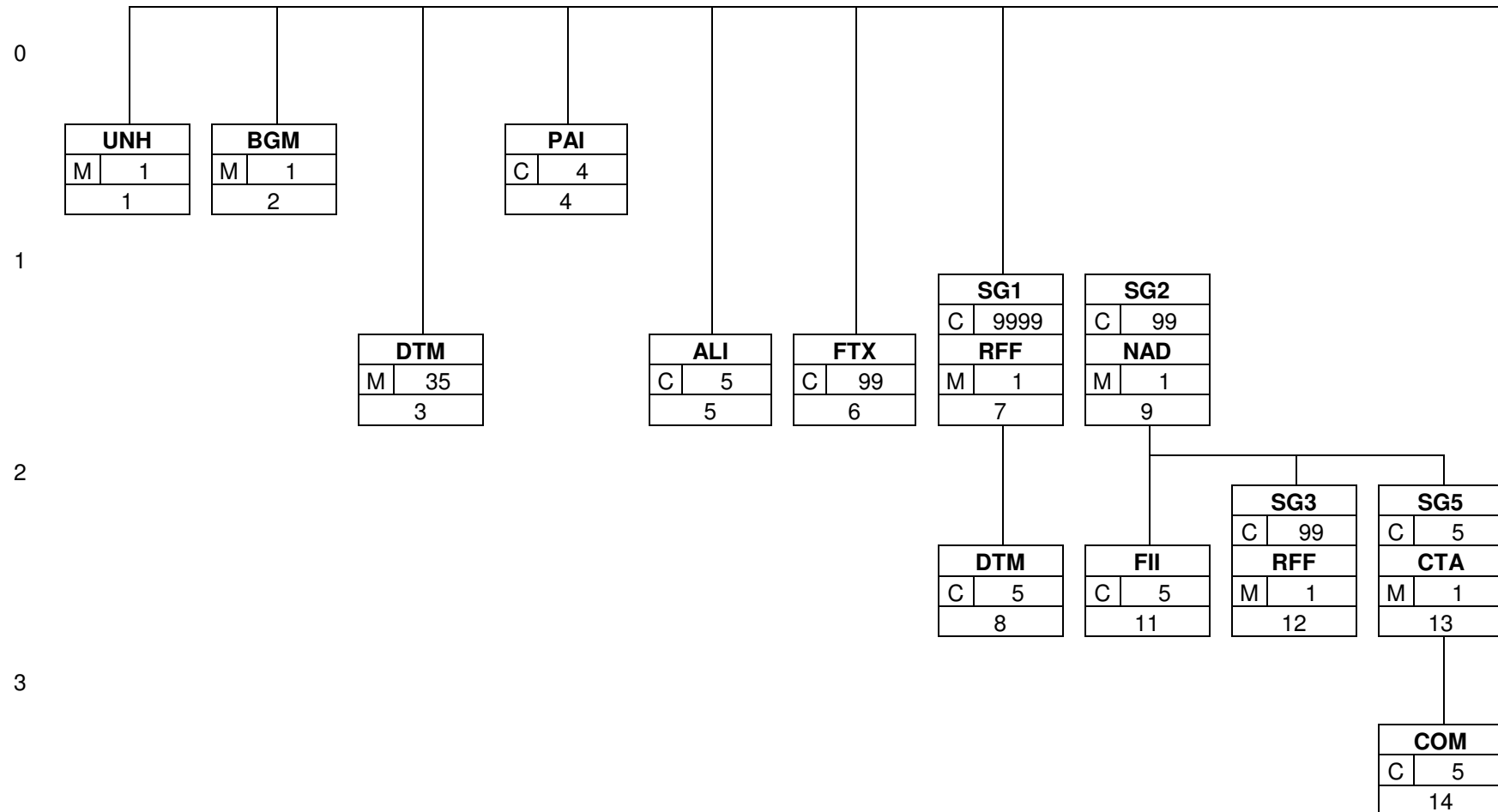
M – Mandatory

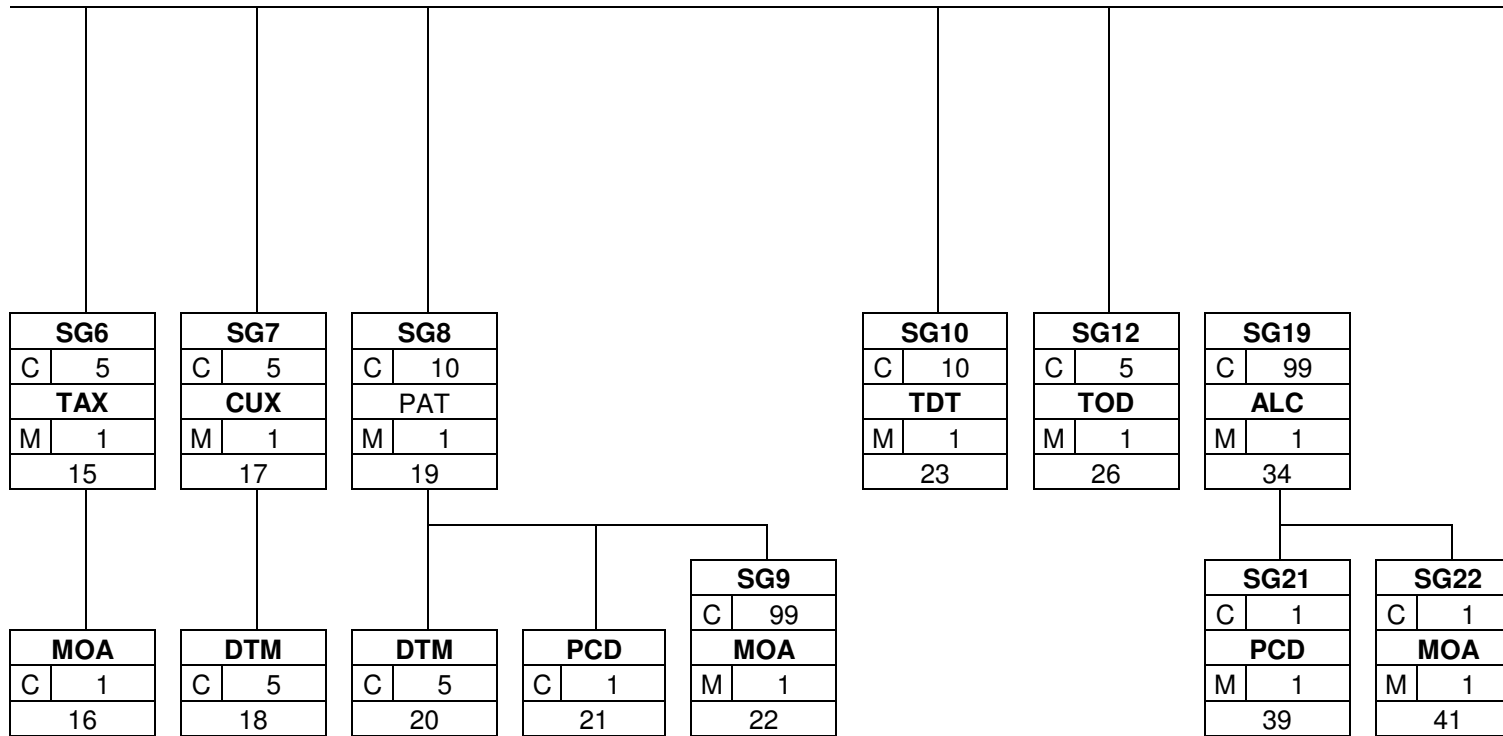
C – Conditional

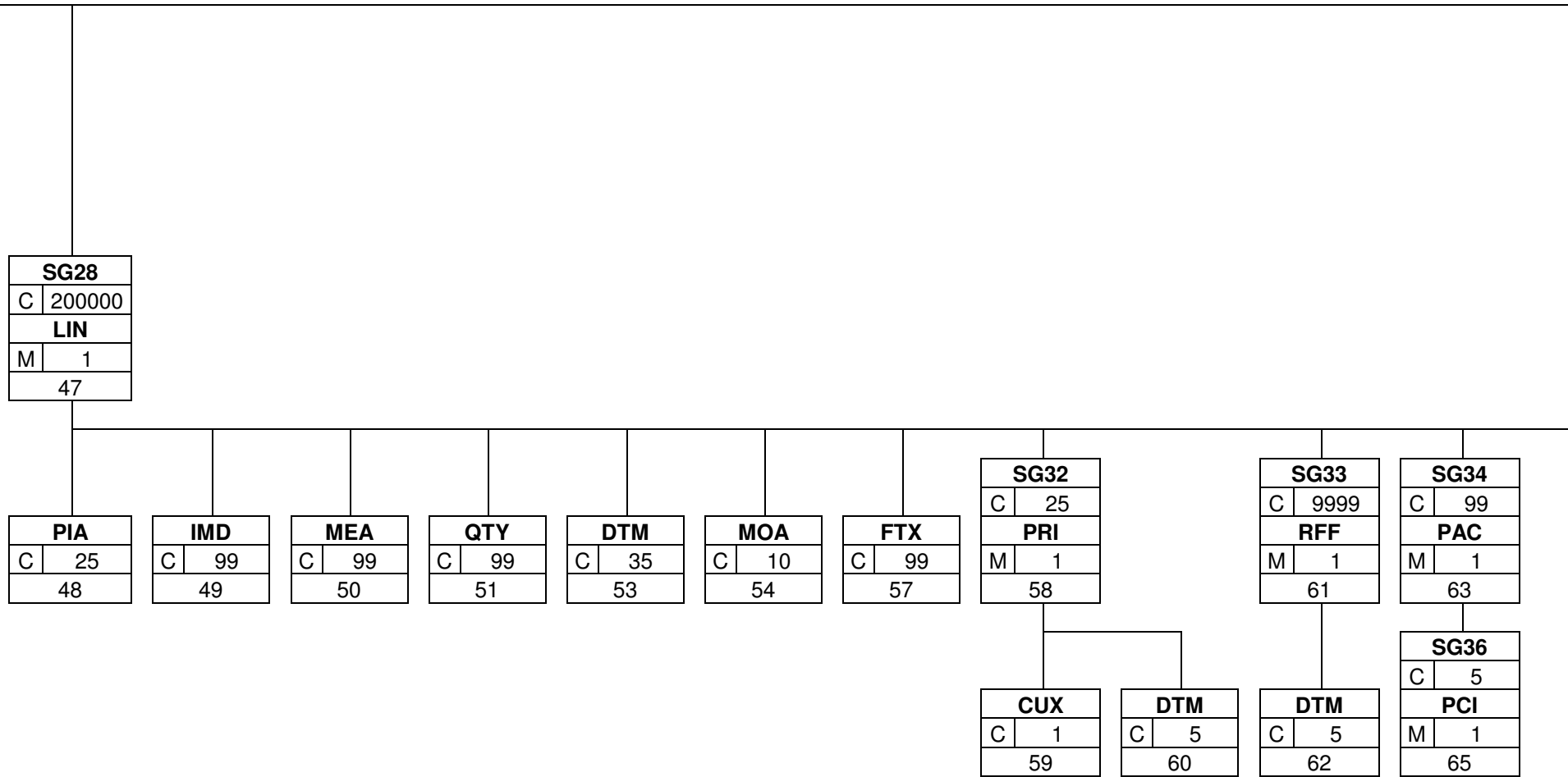
HEADING SECTION				
1	UNH	M	1	Message Header
2	BGM	M	1	Beginning of message
3	DTM	M	35	Date/time/period
4	PAI	C	4	Payment instructions
5	ALI	C	5	Additional information
6	FTX	C	99	Free text
	SG1	C	9999	RFF-DTM
7	RFF	M	1	Reference
8	DTM	C	5	Date/time/period
	SG2	C	99	NAD-FII-SG3-SG5
9	NAD	M	1	Name and address
11	FII	C	5	Financial institution information
	SG3	C	99	RFF
12	RFF	M	1	Reference
	SG5	C	5	CTA-COM
13	CTA	M	1	Contact information
14	COM	C	5	Communication contact
	SG6	C	5	TAX-MOA
15	TAX	M	1	Duty/tax/fee details
16	MOA	C	1	Monetary amount
	SG7	C	5	CUX-DTM
17	CUX	M	1	Currencies
18	DTM	C	5	Date/time/period
	SG8	C	10	PAT-DTM-PCD-SG9
19	PAT	M	1	Payment terms basis
20	DTM	C	5	Date/time/period
21	PCD	C	1	Percentage details
	SG9	C	99	MOA
22	MOA	M	1	Monetary amount
	SG10	C	10	TDT
23	TDT	M	1	Details of transport
	SG12	C	5	TOD
26	TOD	M	1	Terms of delivery or transport
	SG19	C	99	ALC-SG21-SG22
34	ALC	M	1	Allowance or charge
	SG21	C	1	PCD
39	PCD	M	1	Percentage details
	SG22	C	1	MOA
41	MOA	M	1	Monetary amount

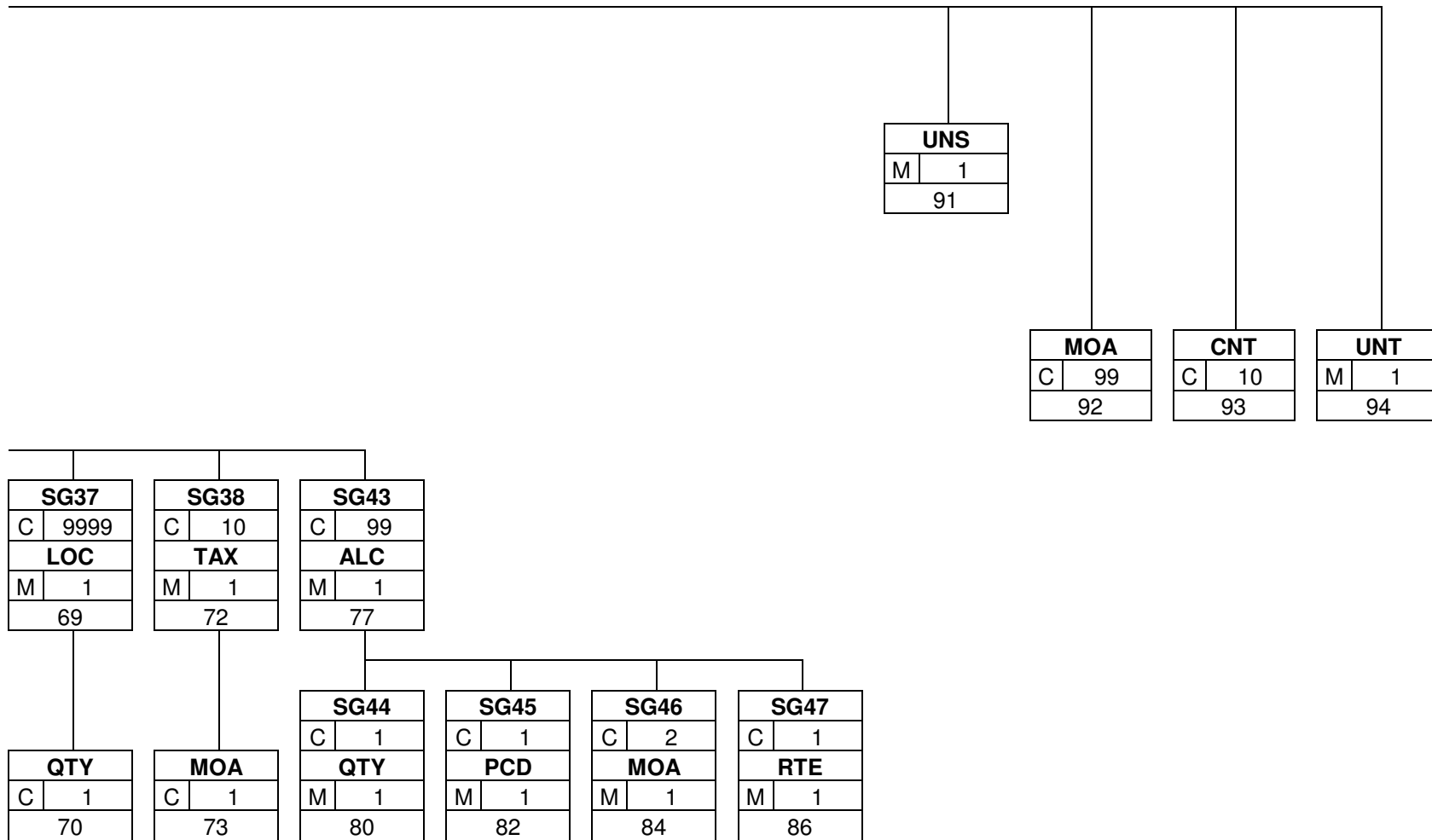
DETAIL SECTION				
	SG28	C	200000	LIN-PIA-IMD-MEA-QTY-DTM-MOA-FTX-SG32- SG33-SG34-SG37-SG38-SG43
47	LIN	M	1	Line item
48	PIA	C	25	Additional product id
49	IMD	C	99	Item description
50	MEA	C	99	Measurements
51	QTY	C	99	Quantity
53	DTM	C	35	Date/time/period
54	MOA	C	10	Monetary amount
57	FTX	C	99	Free text
	SG32	C	25	PRI-CUX-DTM
58	PRI	M	1	Price details
59	CUX	C	1	Currencies
60	DTM	C	5	Date/time/period
	SG33	C	9999	RFF-DTM
61	RFF	M	1	Reference
62	DTM	C	5	Date/time/period
	SG34	C	99	PAC-SG36
63	PAC	M	1	Package
	SG36	C	5	PCI
65	PCI	M	1	Package identification
	SG37	C	9999	LOC-QTY
69	LOC	M	1	Place/location identification
70	QTY	C	1	Quantity
	SG38	C	10	TAX-MOA
72	TAX	M	1	Duty/tax/fee details
73	MOA	C	1	Monetary amount
	SG43	C	99	ALC-SG44-SG45-SG46-SG47
77	ALC	M	1	Allowance or charge
	SG44	C	1	QTY
80	QTY	M	1	Quantity
	SG45	C	1	PCD
82	PCD	M	1	Percentage details
	SG46	C	2	MOA
84	MOA	M	1	Monetary amount
	SG47	C	1	RTE
86	RTE	M	1	Rate details
SUMMARY SECTION				
91	UNS	M	1	Section control
92	MOA	C	99	Monetary amount
93	CNT	C	10	Control total
94	UNT	M	1	Message trailer

Branching Diagram









Segments Description

Heading Section					
<i>Serial number</i>	<i>Segment tag</i>	<i>Name</i>	<i>Application</i>	<i>Maximum number of repetitions</i>	<i>Function</i>
1	UNH	Message Header	M	1	This segment is used to head, identify and specify a message.
2	BGM	Beginning of message	M	1	This segment is used to indicate the type and function of the message and to transmit the identifying number.
3	DTM	Date/time/period	M	35	This segment is used to specify the date of the Order and, where required, requested dates concerning the delivery of the goods.
4	PAI	Payment instructions	C	4	This segment is used to indicate payment instructions which may be used or imposed by the party issuing the order.
5	ALI	Additional information	C	5	This segment is used to specify any additional information related to the complete order.
6	FTX	Free text	C	99	This segment is used to provide free form or coded text information for the entire purchase order.
SG1	RFF-DTM		C	9999	A group of segments for giving references and where necessary, their dates, relating to the whole message e.g. contract number, import/export license number, reservation number.
7	RFF	Reference	M	1	This segment is used to specify other references which relate to the transmission, for example, contract numbers, price list numbers, etc. The references given at this point are valid for the whole order unless superseded by references at line level.
8	DTM	Date/time/period	C	5	This segment is used to specify dates relating to the references given in the preceding RFF segment.
SG2	NAD-FII-SG3-SG5		C	99	A group of segments identifying the parties with associated information.
9	NAD	Name and address	M	1	This segment is used to identify the trading partners involved in the Order process. Identification of the buyer and supplier of goods and services is mandatory using DE's 3035 and C082. Additionally, the invoicee and/or delivery party should be specified if different to the buyer.
11	FII	Financial institution information	C	5	This segment is used to identify financial institution information related to the party identified in the NAD segment.



1 Oct 2008

SG3	RFF		C	99	A group of segments giving references only relevant to the specified party rather than the whole order
12	RFF	Reference	M	1	This segment is used to specify reference numbers related to the party specified in the previous NAD segment.
SG5	CTA-COM		C	5	A group of segments giving contact details of the specific person or department within the party identified in the NAD segment.
13	CTA	Contact information	M	1	This segment is used to identify contact details for the party specified in the previous NAD segment.
14	COM	Communication contact	C	5	This segment identifies the communications number, and type of communications, for the person or department identified in the preceding CTA segment.
SG6	TAX-MOA		C	5	A group of segments specifying tax related information.
15	TAX	Duty/tax/fee details	M	1	This segment is used to indicate the type, category, and rate of tax for the order.
16	MOA	Monetary amount	C	1	This segment is used to indicate tax amounts for the previous TAX segment.
SG7	CUX-DTM		C	5	A group of segments specifying the currencies and related dates/periods valid for the whole order.
17	CUX	Currencies	M	1	This segment is used to specify currency information for the complete order.
18	DTM	Date/time/period	C	5	This segment is used to specify dates related to the previous CUX segment.
SG8	PAT-DTM-PCD-SG9		C	10	A group of segments specifying the terms of payment applicable for the whole order.
19	PAT	Payment terms basis	M	1	This segment is used by the issuer of the order to request special payment terms for the current order only.
20	DTM	Date/time/period	C	5	This segment is used to specify any dates associated with the payment terms.
21	PCD	Percentage details	C	1	This segment is used to specify percentages which will be allowed or charged if an invoice is not paid to terms.
SG9	MOA		C	99	A group of segments identifying related monetary amounts at the header level.
22	MOA	Monetary amount	M	1	This segment is used to specify monetary values which will be allowed or charged if the invoice is not paid according to the payment terms.
SG10	TDT		C	10	A group of segments identifying the mode and means of transport, relating to the whole order.
23	TDT	Details of transport	M	1	This segment is used to specify transport instructions for the whole Purchase Order, such



1 Oct 2008

					as requesting an express transport service.
SG12	TOD		C	5	A group of segments indicating the terms of delivery for the whole order.
26	TOD	Terms of delivery or transport	M	1	This segment is used to specify the terms of delivery for the complete order.
SG19	ALC-SG21-SG22		C	99	A group of segments specifying allowances and charges for the whole order. Allowances and charges in the heading section of a message are independent from those in the detail section, e.g. ALC at detail level does not override ALC at heading level.
34	ALC	Allowance or charge	M	1	This segment is used to specify any allowances or charges related to the complete order. If allowances and charges are applicable for a specific line item then they must be indicated using segment group 43.
SG21	PCD		C	1	A group of segments specifying the percentage for the allowance or charge,
39	PCD	Percentage details	M	1	This segment is used to specify percentage allowance/charge information.
SG22	MOA		C	1	A group of segments specifying a monetary amount for an allowance or charge.
41	MOA	Monetary amount	M	1	This segment is used to specify monetary amount allowance/charge information.

Detail Section

<i>Serial number</i>	<i>Segment tag</i>	<i>Name</i>	<i>Application</i>	<i>Maximum number of repetitions</i>	<i>Function</i>
SG28	LIN-PIA-IMD-MEA-QTY-DTM-MOA-FTX-SG32-SG33-SG34-SG37-SG38-SG43		C	200000	A group of segments providing details of the individual ordered items. This Segment group may be repeated to give sub-line details.
47	LIN	Line item	M	1	This segment is used to identify the item being ordered.
48	PIA	Additional product id	C	25	This segment is used to specify additional or substitution item identification codes such as a buyer's, or seller's item number.
49	IMD	Item description	C	99	This segment is used to describe the current line item.
50	MEA	Measurements	C	99	This segment is used to specify the actual physical dimensions of the product being ordered where that product is sold in variable lengths or volumes.
51	QTY	Quantity	C	99	This segment is used to specify the total quantity ordered for the current line identified in the LIN segment.

53	DTM	Date/time/period	C	35	This segment is primarily used to specify the dates (and possibly times) associated with the delivery or collection of the currently identified product. Also other relevant dates may be specified.
54	MOA	Monetary amount	C	10	This segment is used for two purposes, firstly, when allowances/charges are involved, to indicate net amounts for the line, and secondly, to provide valuation amounts, e.g., customs value.
57	FTX	Free text	C	99	This segment is used to specify any special requirements for the current line item.
SG32	PRI-CUX-DTM		C	25	A group of segments identifying the relevant pricing information for the goods or services ordered.
58	PRI	Price details	M	1	This segment is used to detail the price for the current product identified in the LIN segment.
59	CUX	Currencies	C	1	This segment is used to specify currency data related to the previous PRI segment.
60	DTM	Date/time/period	C	5	This segment is used to specify the dates (and possibly times) associated with the price of the currently identified product.
SG33	RFF-DTM		C	9999	A group of segments giving references and where necessary, their dates, relating to the line item.
61	RFF	Reference	M	1	This segment is used to identify references associated with the line item. This information may override what is specified in the heading section when the same qualifier is used. This segment may also be used to allocate a unique reference number to this line item in this order.
62	DTM	Date/time/period	C	5	This segment is used to specify dates and times associated with the preceding RFF segment.
SG34	PAC-SG36		C	99	A group of segments identifying the packaging, physical dimensions and marks for goods referenced in the line item.
63	PAC	Package	M	1	This segment is used in those cases where despatch unit coding has not yet been implemented, not allowing direct ordering in LIN, yet requirements exist to define the despatch unit to be delivered.
SG36	PCI		C	5	A group of segments specifying the markings and labels on individual physical units.
65	PCI	Package identification	M	1	This segment is used to detail markings and labels on individual packages or physical units.
SG37	LOC-QTY		C	9999	A group of segments specifying destination and quantity details for consignments involving multi-destination deliveries.
69	LOC	Place/location identification	M	1	This segment is used to identify the location of delivery for a split delivery order.



1 Oct 2008

70	QTY	Quantity	C	1	This segment is used to indicate the delivery quantity for the delivery location specified in the previous LOC segment. The total of all quantities specified in segment group 37 for the line, must equal the value for the total quantity detailed in the QTY segment at line level.
SG38	TAX-MOA		C	10	A group of segments specifying tax related information.
72	TAX	Duty/tax/fee details	M	1	This segment is used to identify the type and rate of tax that is applicable for the current line item. This segment is only used if the tax rate at line level differs from the rate specified in the header section.
73	MOA	Monetary amount	C	1	This segment is used to indicate tax amounts related to the preceding TAX segment.
SG43	ALC-SG44-SG45-SG46-SG47		C	99	A group of segments specifying allowances and charges for the line item. Allowances and charges in the heading section of a message are independent from those in the detail section, e.g. ALC at detail level does not override ALC at heading level.
77	ALC	Allowance or charge	M	1	This segment is used to specify any allowances or charges which are applicable for the current line item. If allowances and charges are applicable for the same line item they must be indicated using separate repeats of segment group 43.
SG44	QTY		C	1	A group of segments specifying the quantity of the allowance or charge with its measure unit specifier.
80	QTY	Quantity	M	1	This segment is used to specify quantity allowance/charge information.
SG45	PCD		C	1	A group of segments specifying the percentage for the allowance or charge.
82	PCD	Percentage details	M	1	This segment is used to specify percentage allowance/charge information.
SG46	MOA		C	2	A group of segments specifying a monetary amount for an allowance or charge.
84	MOA	Monetary amount	M	1	This segment is used to specify monetary amount allowance/charge information.
SG47	RTE		C	1	A group of segments specifying the rate per unit and basis to which the allowance or charge applies e.g. The allowance/charge amount is 3 EUR per 10 tons.
86	RTE	Rate details	M	1	This segment is used to specify rate allowance/charge information.

Summary Section					
<i>Serial number</i>	<i>Segment tag</i>	<i>Name</i>	<i>Application</i>	<i>Maximum number of repetitions</i>	<i>Function</i>
91	UNS	Section control	M	1	This segment is used to separate the detail and summary sections of the message.
92	MOA	Monetary amount	C	99	This segment is used to indicate total amounts for the order.
93	CNT	Control total	C	10	This segment is used to provide message control totals.
94	UNT	Message Trailer	M	1	This segment is a mandatory UN/EDIFACT segment. It must always be the last segment in the message.

Segment content descriptions

Legends in the detailed description of the segment

Data element tag: Tag of the data element in the standard

Name: Name of the data element

Usage: Indicates whether the data element is mandatory/conditional/dependent:

M = mandatory

C = conditional

D = dependent – it becomes mandatory depending on other data element; relevant explanatory notes could be found in “Notes/dependency descriptions” field.

Format: Indicates the format of the data element can be displayed in the message, possible formats:

a	alphabetic characters
n	numeric characters
an	alpha-numeric characters
a3	3 alphabetic characters, fixed length
n3	3 numeric characters, fixed length
an3	3 alpha-numeric characters, fixed length
a..3	up to 3 alphabetic characters
n..3	up to 3 numeric characters
an..3	up to 3 alpha-numeric characters

Example: Example for the application of data element

Description/code value: Description of the data element or the applicable code value

Notes/dependency descriptions: Notes relating to the segment and the descriptions of the relation between data elements.

Example: Example for the total application of the segment.

Segments of header section

<i>Number</i>	<i>Segment tag</i>	<i>Usage</i>	<i>Maximum number of repetitions</i>		
1.	UNH – Message header	M	1		
<i>Function:</i>					
To head, identify and specify a message.					
<i>Data element tag</i>	<i>Name</i>	<i>Usage</i>	<i>Format</i>	<i>Example</i>	<i>Description/Code value</i>
0062	Message reference number	M	an..14	ME000001	Sender's unique message reference. Sequence number of messages in the interchange. Data element 0062 in UNT will have the same value. Generated by the sender.
S009	MESSAGE IDENTIFIER	M	--	--	--
0065	Message type identifier	M	an..6	ORDERS	ORDERS = Purchase order message
0052	Message type version number	M	an..3	D	D = Draft version/UN/EDIFACT Directory
0054	Message type release number	M	an..3	01B	01B = Release 2001 - B
0051	Controlling agency	M	an..2	UN	UN = UN/CEFACT
0057	Association assigned code	M	an..6	EAN010	EAN010 = EAN version control number (EAN Code) Indicates that the message is the EANCOM version 010 of the UNSM Purchase Order.
Notes/Dependency descriptions:					
This segment is used to head, identify and specify a message. DE's 0065, 0052, 0054, and 0051: Indicate that the message is an UNSM Purchase Order based on the D.01B directory under the control of the United Nations.					
Example:					
UNH+ME000001+ORDERS:D:01B:UN:EAN010' The reference number of the ORDERS message is ME000001.					

<i>Number</i>	<i>Segment tag</i>	<i>Usage</i>	<i>Maximum number of repetitions</i>		
2.	BGM – Beginning of Message	M	1		
<i>Function:</i>					
To indicate the type and function of a message and to transmit the identifying number.					
<i>Data element tag</i>	<i>Name</i>	<i>Usage</i>	<i>Format</i>	<i>Example</i>	<i>Description/Code value</i>
C002	DOCUMENT/ MESSAGE NAME	M	--	--	--
1001	Document/message name, coded	M	an..3	220	220 = Order 221 = Blanket order 224 = Rush order 226 = Call of order 227 = Consignment order 22E = Manufacturer raised order 258 = Standing order 225 = Repair order 401 = Transshipment order 402 = Cross docking order
1131	<i>Code list qualifier</i>	<i>N</i>			
3055	Code list responsible agency, coded	D	an..3	9	9 = EAN This data element must only be used if DE 1001 contains an EAN Code.
C106	DOCUMENT/ MESSAGE IDENTIFICATION	M	--	--	--
1004	Document/message number	M	an..35		A number which identifies the order. It is generated by the issuer of the order and is a sequential number.
1225	Message function code	M	an..3	9	9 = Original 5 = Replace 6 = Confirmation 31 = Copy
Notes/Dependency descriptions:					
This segment is used to indicate the type and function of a message and to transmit the identifying number.					
DE 1004: It is recommended that the length of the document number be restricted to a maximum of 17 characters.					
Example:					
BGM+220+128576+9'					
This example indicates that the message is an original order with the number 128576.					



1 Oct 2008

<i>Number</i>	<i>Segment tag</i>	<i>Usage</i>	<i>Maximum number of repetitions</i>		
3.	DTM – Date/time/period	M	35		
<i>Function:</i>					
To specify date, and/or time, or period.					
<i>Data element tag</i>	<i>Name</i>	<i>Usage</i>	<i>Format</i>	<i>Example</i>	<i>Description/Code value</i>
C507	DATE/TIME/ PERIOD	M	--	--	--
2005	Date or time or period function code qualifier	M	an..3	137	137 = Document/message date/time 2 = Delivery date/time, requested
2380	Date or time or period value	M	an..35	20071015	
2379	Date or time or period format code	M	an..3	102	102 = CCYYMMDD 203 = CCYYMMDDHHMM
Notes/Dependency descriptions:					
This segment is used to specify the date of the Purchase Order or any dates related to the order or delivery of goods. DE 2005: Identification of the 'Document/message date/time' (code value 137) is mandatory in an EANCOM message.					
Example:					
DTM+137:20071015:102'					

<i>Number</i>	<i>Segment tag</i>	<i>Usage</i>	<i>Maximum number of repetitions</i>		
4.	PAI – Payment instructions	C	4		
<i>Function:</i>					
To specify the instructions for payment.					
<i>Data element tag</i>	<i>Name</i>	<i>Usage</i>	<i>Format</i>	<i>Example</i>	<i>Description/Code value</i>
C534	PAYMENT INSTRUCTIONS DETAILS	M			
4439	Payment conditions code	M	an..3	1	1 = Direct payment 35 = Documents through banks
4431	Payment guarantee means code	C	an..3	20	20 = Goods as security
4461	Payment means code	C	an..3	42	10 = In cash 20 = Cheque 30 = Credit transfer 31 = Debit transfer 42 = Payment to bank account 49 = Direct debit 14E = Payment by bank giro
1131	Code list identification code	N			
3055	Code list responsible agency code	D	an..3		9 = EAN Must be used if DE4461 contains an EAN Code
Notes/Dependency descriptions:					
This segment is used to indicate payment instructions which may be used or imposed by the party issuing the order.					
Example:					
PAI+::42'					
This example indicates the payment to bank account.					

<i>Number</i>	<i>Segment tag</i>	<i>Usage</i>	<i>Maximum number of repetitions</i>		
5.	ALI – Additional information	C	5		
<i>Function:</i>					
To indicate that special conditions due to the origin, customs preference, fiscal or commercial factors are applicable.					
<i>Data element tag</i>	<i>Name</i>	<i>Usage</i>	<i>Format</i>	<i>Example</i>	<i>Description/Code value</i>
3239	Country of origin name code	N			
9213	Duty regime type code	N			
4183	Special condition code	M	an..3	4	4 = Urgent delivery of reserved goods 142 = Invoiced but not replenished 143 = Replenished but not invoiced 144 = Deliver full order 170 = Goods for retail outlet shelf 171 = Security stock X1 = No back orders when partial delivery X2 = Back orders accepted when partial delivery
Notes/Dependency descriptions:					
This segment is used to specify any additional information related to the complete order. The code 4 (Urgent delivery of reserved goods) can be indicated only if it is a rush order (BGM segment DE 1001 = 224). The codes 171 (Security stock), 142 (invoice but not replenished) and 143 (replenished but not invoiced) can be indicated only if it is a consignment order (BGM segment DE 1001 = 227).					
Example:					
ALI+++4' This example indicates the orders is urgent delivery of reserved goods.					

<i>Number</i>	<i>Segment tag</i>	<i>Usage</i>	<i>Maximum number of repetitions</i>		
6.	FTX – Free text	C	99		
<i>Function:</i>					
To provide free form or coded text information.					
<i>Data element tag</i>	<i>Name</i>	<i>Usage</i>	<i>Format</i>	<i>Example</i>	<i>Description/Code value</i>
4451	Text subject code qualifier	M	an..3	PUR	PUR = Purchasing information DEL = Delivery information ZZZ = Mutually defined AAI = General information
4453	Free text function code	C	an..3	1	1 = Text for subsequent use 3 = Text for immediate use
C107	TEXT REFERENCE	D			This composite is only used when trading partners have agreed to use mutually defined code values. References to a standard text.
4441	Free text value code	M	an..17	001	001 = ...standard text...
1131	Code list identification code	N			
3055	Code list responsible agency code	D	an..3	91	91 = Assigned by supplier or supplier's agent 92 = Assigned by buyer or buyer's agent
C108	TEXT LITERAL	D			This composite is only used if coded text can not be used.
4440	Free text value	M	an..512		
4440	Free text value	C	an..512		
4440	Free text value	C	an..512		
4440	Free text value	C	an..512		
4440	Free text value	C	an..512		
3453	Language name code	D	an..3		ISO 639 two alpha code This data element is only used when non coded free text has been provided in data element C108.
Notes/Dependency descriptions:					
<p>This segment is used to provide free form or coded text information for the entire purchase order. Use of this segment in free form is not recommended since it may inhibit automatic processing of the Order. Coded reference to standard texts is an available functionality which enables automatic processing and reduces transmission and processing overheads. Standard texts should be mutually defined among trading partners and can be used to cover other requirements than legal.</p> <p>The use of the data composite C107 is to provide a code. The use of the data composite C108 is to provide the explanation of code.</p>					
Example:					
FTX+PUR+1+001::91'					
This example indicates a purchasing information (e.g. standard text code 001=Special prices effective first of month)					



1 Oct 2008

<i>Number</i>	<i>Segment tag</i>			<i>Usage</i>	<i>Maximum number of repetitions</i>
SG1	RFF-DTM			C	9999
7.	RFF - Reference			M	1
<i>Function:</i>					
To specify a reference.					
<i>Data element tag</i>	<i>Name</i>	<i>Usage</i>	<i>Format</i>	<i>Example</i>	<i>Description/Code value</i>
C506	REFERENCE	M			
1153	Reference code qualifier	M	an..3	CT	CT = Contract number PL = Price list number PD = Promotion deal number CR = Customer reference number UC = Ultimate customer's reference number ON = Order number (buyer) BO = Blanket order number VN = Order number (supplier)
1154	Reference identifier	M	an..70		
Notes/Dependency descriptions:					
This segment is used to specify other references which relate to the transmission, for example, contract numbers, price list numbers, etc. The references given at this point are valid for the whole order unless superseded by references at line level.					
Example:					
RFF+CT:652744'					
This example indicates the contract number 652744.					

<i>Number</i>	<i>Segment tag</i>	<i>Usage</i>	<i>Maximum number of repetitions</i>		
SG1	RFF-DTM	C	9999		
8.	DTM – Date/time/period	C	5		
<i>Function:</i>					
To specify date, and/or time, or period.					
<i>Data element tag</i>	<i>Name</i>	<i>Usage</i>	<i>Format</i>	<i>Example</i>	<i>Description/Code value</i>
C507	DATE/TIME/PERIOD	M			
2005	Date or time or period function code qualifier	M	an..3	171	171 = Reference date/time
2380	Date or time or period value	M	an..35		
2379	Date or time or period format code	M	an..3	102	102 = CCYYMMDD
Notes/Dependency descriptions:					
This segment is used to specify dates relating to the references given in the preceding RFF segment.					
Example:					
DTM+171:20020825:102'					

<i>Number</i>	<i>Segment tag</i>	<i>Usage</i>	<i>Maximum number of repetitions</i>		
SG2	NAD-FII-SG3-SG5	C	99		
9.	NAD – Name and address	M	1		
<i>Function:</i>					
To specify the name/address and their related function.					
<i>Data element tag</i>	<i>Name</i>	<i>Usage</i>	<i>Format</i>	<i>Example</i>	<i>Description/Code value</i>
3035	Party function code qualifier	M	an..3	BY	BY = Buyer DP = Delivery party SU = Supplier PW = Despatch party PR = Payer IV = Invoicee UC = Ultimate consignee UD = Ultimate customer MR = Message recipient MS = Document/Message issuer/sender LF = Buyer's corporate office LG = Supplier's corporate office SF = Ship from MF = Manufacturer of goods LSP = Logistic Service Provider OB = Ordered by
C082	PARTY IDENTIFICATION DETAILS	C	--	--	--
3039	Party identifier	M	an..35	5411234512300	For identification of parties it is recommended to use GLN - Format n13.
1131	Code list identification code	N			
3055	Code list responsible agency code	M	an..3	9	9 = EAN
Notes/Dependency descriptions:					
This segment is used to identify the trading partners involved in the Order process.					
Example:					
NAD+BY+5411234512300::9'					
NAD+SU+5412345123450::9'					

<i>Number</i>	<i>Segment tag</i>	<i>Usage</i>	<i>Maximum number of repetitions</i>		
SG2	NAD-FII-SG3-SG5	C	99		
11.	FII – Financial institution information	C	5		
<i>Function:</i>					
To identify an account and a related financial institution.					
<i>Data element tag</i>	<i>Name</i>	<i>Usage</i>	<i>Format</i>	<i>Example</i>	<i>Description/Code value</i>
3035	Party function code qualifier	M	an..3	BF	BF = Beneficiary's bank
C078	ACCOUNT HOLDER IDENTIFICATION	M			
3194	Account holder identifier	M	an..35		
3192	Account holder name	C	an..35		
3192	Account holder name	N			
6345	Currency identification code	C	an..3		
C088	INSTITUTION IDENTIFICATION	C			
3433	Institution name code	C	an..11		
1131	Code list identification code	C	an..17	25	25 = Bank identification
3055	Code list responsible agency code	D	an..3		5 = ISO
3434	Institution branch identifier	C	an..17		
1131	Code list identification code	C	an..17		
3055	Code list responsible agency code	D	an..3		
3207	Country name code	C	an..3		
Notes/Dependency descriptions:					
This segment is used to identify financial institution information related to the party identified in the NAD segment.					
Example:					
FII+BF+22065712+KREDBEBB:25:5' This example indicates that the beneficiary bank account is 22065712 and institution name code is KREDBEBB.					

<i>Number</i>	<i>Segment tag</i>	<i>Usage</i>	<i>Maximum number of repetitions</i>		
SG2	NAD-FII-SG3-SG5	C	99		
SG3	RFF	C	99		
12.	RFF – Reference	M	1		
<i>Function:</i>					
To specify a reference.					
<i>Data element tag</i>	<i>Name</i>	<i>Usage</i>	<i>Format</i>	<i>Example</i>	<i>Description/Code value</i>
C506	REFERENCE	M			
1153	Reference code qualifier	M	an..3	YC1	YC1 = Additional party identification IT = Internal customer number VA = VAT registration number GN = Government reference number
1154	Reference identifier	M	an..70		
Notes/Dependency descriptions:					
This segment is used to specify reference numbers related to the party specified in the previous NAD segment.					
Example:					
RFF+YC1:I87765432'					
This example indicates the internal identification number of the buyer.					



<i>Number</i>	<i>Segment tag</i>	<i>Usage</i>	<i>Maximum number of repetitions</i>		
SG2	NAD-FII-SG3-SG5	C	99		
SG5	CTA-COM	C	5		
13.	CTA – Contact information	M	1		
<i>Function:</i>					
To identify a person or a department to whom communication should be directed.					
<i>Data element tag</i>	<i>Name</i>	<i>Usage</i>	<i>Format</i>	<i>Example</i>	<i>Description/Code value</i>
3139	Contact function code	M	an..3	PD	PD = Purchasing contact OC = Order contact SR = Sales representative or department WH = Warehouse
C056	DEPARTMENT OR EMPLOYEE DETAILS	C			
3413	Department or employee name code	M	an..17		
3412	Department or employee name	C	an..35		
Notes/Dependency descriptions:					
This segment is used to identify contact details for the party specified in the previous NAD segment.					
Example:					
CTA+OC+DAVID KOVACS'					
This example indicates the order contact: DAVID KOVACS.					

<i>Number</i>	<i>Segment tag</i>	<i>Usage</i>	<i>Maximum number of repetitions</i>		
SG2	NAD-FII-SG3-SG5	C	99		
SG5	CTA-COM	C	5		
14.	COM – Communication contact	C	5		
<i>Function:</i>					
To identify a communication number of a department or a person to whom communication should be directed.					
<i>Data element tag</i>	<i>Name</i>	<i>Usage</i>	<i>Format</i>	<i>Example</i>	<i>Description/Code value</i>
C076	COMMUNICATION CONTACT	M			
3148	Communication address identifier	M	an..512		
3155	Communication address code qualifier	M	an..3		EM = Electronic mail FX = Fax TE = Telephone TL = Telex XF = X.400
Notes/Dependency descriptions:					
This segment identifies the communications number, and type of communications, for the person or department identified in the preceding CTA segment.					
Example:					
COM+003622271020:TE'					

<i>Number</i>	<i>Segment tag</i>	<i>Usage</i>	<i>Maximum number of repetitions</i>		
SG6	TAX-MOA	C	5		
15.	TAX – Duty/tax/fee details	M	1		
<i>Function:</i>					
To specify relevant duty/tax/fee information.					
<i>Data element tag</i>	<i>Name</i>	<i>Usage</i>	<i>Format</i>	<i>Example</i>	<i>Description/Code value</i>
5283	Duty or tax or fee function code qualifier	M	an..3	7	7 = Tax
C241	DUTY/TAX/FEE TYPE	M			
5153	Duty or tax or fee type name code	M	an..3	VAT	VAT = Value added tax ENV = Environmental tax OTH = Other tax
1131	Code list identification code	N			
3055	Code list responsible agency code	D	an..3		9 = EAN
C533	DUTY/TAX/FEE ACCOUNT DETAIL	N			
5286	Duty or tax or fee assessment basis value	N			
C243	DUTY/TAX/FEE DETAIL	C			
5279	Duty or tax or fee rate code	N			
1131	Code list identification code	N			
3055	Code list responsible agency code	N			
5278	Duty or tax or fee rate	M	an..17		
5305	Duty or tax or fee category code	D	an..3		E = Exempt from tax
Notes/Dependency descriptions:					
<p>This segment is used to indicate the type, category, and rate of tax for the order.</p> <p>The composite element C243 is optional because the environment tax has not a duty or tax or fee rate it is just a total amount.</p> <p>The value added tax, the alcohol tax and the other taxes have always a tax rate. The tax rate is not used for the environment tax. Alcohol tax is not a rate depending on price, it is a rate depending on the volume of alcohol and the type of alcohol</p>					
Example:					
TAX+7+VAT++++:21'					
This example indicates a value added tax with a rate of 21%.					

<i>Number</i>	<i>Segment tag</i>	<i>Usage</i>	<i>Maximum number of repetitions</i>		
SG6	TAX-MOA	C	5		
16.	MOA – Monetary amount	C	1		
<i>Function:</i>					
To specify a monetary amount.					
<i>Data element tag</i>	<i>Name</i>	<i>Usage</i>	<i>Format</i>	<i>Example</i>	<i>Description/Code value</i>
C516	MONETARY AMOUNT	M			
5025	Monetary amount type code qualifier	M	an..3		124 = Tax amount 125 = Taxable amount
5004	Monetary amount	M	n..35		
Notes/Dependency descriptions:					
<p>This segment is used to indicate tax/taxable amount for the previous TAX segment. The taxable amount is the monetary amount liable to tax. The tax amount is the tax imposed by government or other official authority related to the weight/volume charge or valuation charge.</p>					
Example:					
MOA+125:43233.45'					
This example indicates the taxable amount : 43233.45					

<i>Number</i>	<i>Segment tag</i>	<i>Usage</i>	<i>Maximum number of repetitions</i>
SG7	CUX-DTM	C	5
17.	CUX - Currencies	M	1

Function:

To specify currencies used in the transaction and relevant details for the rate of exchange.

<i>Data element tag</i>	<i>Name</i>	<i>Usage</i>	<i>Format</i>	<i>Example</i>	<i>Description/Code value</i>
C504	CURRENCY DETAILS	M			
6347	Currency usage code qualifier	M	an..3		2 = Reference currency
6345	Currency identification code	M	an..3		ISO 4217 three alpha.
6343	Currency type code qualifier	M	an..3		4 = Invoicing currency 9 = Order currency 10 = Pricing currency 11 = Payment currency
C504	CURRENCY DETAILS	M			
6347	Currency usage code qualifier	M	an..3		3 = Target currency
6345	Currency identification code	M	an..3		ISO 4217 three alpha.
6343	Currency type code qualifier	M	an..3		4 = Invoicing currency 9 = Order currency 10 = Pricing currency 11 = Payment currency
6348	Currency rate value	C	n..4		
5402	Currency exchange rate	D	n..12		The rate of exchange is only used if a target currency has been identified in the second occurrence of C504.

Notes/Dependency descriptions:

This segment is used to specify currency information for the complete order.
 The CUX segment is mandatory for international exchanges. In the case of European Orders, the CUX will be indicated only for exchange outside Euros currency.
 When specifying Reference and Target Currencies for international trade, one occurrence of CUX is all that is required. The reference currency is identified in the first occurrence of composite C504, with the target currency specified in the second occurrence of C504. The rate of exchange between the two is detailed in DE 5402.
 The general rule for calculating the rate of exchange is as follows: Reference Currency multiplied by Rate = Target Currency.

Example:

CUX+2:EUR:9+3:USD:4+0.90243'

This example indicates the order currency Euros and the conversion rate to take in account for the invoice = 0.90243 US dollar.



1 Oct 2008

<i>Number</i>	<i>Segment tag</i>	<i>Usage</i>	<i>Maximum number of repetitions</i>		
SG7	CUX-DTM	C	5		
18.	DTM – Date/time/period	C	5		
<i>Function:</i>					
To specify date, and/or time, or period.					
<i>Data element tag</i>	<i>Name</i>	<i>Usage</i>	<i>Format</i>	<i>Example</i>	<i>Description/Code value</i>
C507	DATE/TIME/PERIOD	M			
2005	Date or time or period function code qualifier	M	an..3	134	134 = Rate of exchange date/time
2380	Date or time or period value	M	an..35		
2379	Date or time or period format code	M	an..3	102	102 = CCYYMMDD 203 = CCYYMMDDHHMM
Notes/Dependency descriptions:					
This segment is used to specify dates related to the previous CUX segment. It can be indicated only if the data element C5402 of the CUX segment is filled.					
Example:					
DTM+134:200520801:102'					
This example indicates the rate of exchange date is 1st of August 2005.					

<i>Number</i>	<i>Segment tag</i>	<i>Usage</i>	<i>Maximum number of repetitions</i>		
SG8	PAT-DTM-PCD-SG9	C	10		
19.	PAT – Payment terms basis	M	1		
<i>Function:</i>					
To specify the payment terms basis.					
<i>Data element tag</i>	<i>Name</i>	<i>Usage</i>	<i>Format</i>	<i>Example</i>	<i>Description/Code value</i>
4279	Payment terms type code qualifier	M	an..3		3 = Fixed date 7 = Extended date 20 = Penalty terms 21 = Payment by instalment 22 = Discount 10E = Complete payment
<i>C110</i>	<i>PAYMENT TERMS</i>	<i>N</i>			
4277	Payment terms description identifier	N			
1131	Code list identification code	N			
3055	Code list responsible agency code	N			
4276	Payment terms description	N			
4276	Payment terms description	N			
<i>C112</i>	<i>TERMS/TIME INFORMATION</i>	<i>M</i>			
2475	Time reference code	M	an..3		1 = Date of order 5 = Date of invoice 9 = Date invoice received 21 = Date goods received by buyer 66 = Specified date 70 = Date of issue of transport of document(s)
2009	Terms time relation code	M	an..3		1 = Reference date 3 = After reference 6 = End of month containing the reference date 7 = End of the month following the month of reference date
2151	Period type code	C	an..3		D = Day M = Month WD = Working days Y = Year
2152	Period count quantity	C	n..3		
Notes/Dependency descriptions:					



1 Oct 2008

All codes indicated in this segment are restricted codes.

This segment is used by the issuer of the order to specify the fixed payment date/period for the current order only.

If the DE 2151 is specified, then DE2152 must be used and the DTM segment will be excluded.

Example:

PAT+3++5:3'

This example indicates that the payment is due after the reference date which in this case is the invoice date.

<i>Number</i>	<i>Segment tag</i>	<i>Usage</i>	<i>Maximum number of repetitions</i>		
SG8	PAT-DTM-PCD-SG9	C	10		
20.	DTM – Date/time/period	C	5		
<i>Function:</i>					
To specify date, and/or time, or period.					
<i>Data element tag</i>	<i>Name</i>	<i>Usage</i>	<i>Format</i>	<i>Example</i>	<i>Description/Code value</i>
C507	DATE/TIME/PERIOD	M			
2005	Date or time or period function code qualifier	M	an..3		13 = Terms net due date 12 = Terms discount due date/time 209 = Value date
2380	Date or time or period value	M	an..35		
2379	Date or time or period format code	M	an..3		102 = CCYYMMDD
Notes/Dependency descriptions:					
<p>All codes indicated in this segment are restricted codes. This segment is used to specify any dates associated with the fixed payment terms. Terms net due date = Date by which payment must be made. Value date = Date on which the funds are at the disposal of the beneficiary or cease to be at the disposal of the ordering customer. Only one date can be provided for the fixed payment</p>					
Example:					
DTM+13:20020331:102'					
This example indicates the terms net due date: 31st of March 2002.					



1 Oct 2008

<i>Number</i>	<i>Segment tag</i>	<i>Usage</i>	<i>Maximum number of repetitions</i>		
SG8	PAT-DTM-PCD-SG9	C	10		
21.	PCD – Percentage details	C	1		
<i>Function:</i>					
To specify percentage information.					
<i>Data element tag</i>	<i>Name</i>	<i>Usage</i>	<i>Format</i>	<i>Example</i>	<i>Description/Code value</i>
C501	PERCENTAGE DETAILS	M			
5245	Percentage type code qualifier	M	an..3	15	12 = Discount 15 = Penalty percentage 68 = Percentage of due amount
5482	Percentage	M	n..10	20	
Notes/Dependency descriptions:					
This segment is used to specify percentages related to the penalty payment which will be charged if an invoice is not paid to terms.					
Example:					
PCD+15:20'					
This example indicates the penalty percentage of 20 %.					

<i>Number</i>	<i>Segment tag</i>	<i>Usage</i>	<i>Maximum number of repetitions</i>		
SG8	PAT-DTM-PCD-SG9	C	10		
SG9	MOA	C	99		
22.	MOA – Monetary amount	M	1		
<i>Function:</i>					
To specify a monetary amount.					
<i>Data element tag</i>	<i>Name</i>	<i>Usage</i>	<i>Format</i>	<i>Example</i>	<i>Description/Code value</i>
C516	MONETARY AMOUNT	M			
5025	Monetary amount type code qualifier	M	an..3	201	52 = Discount amount 201 = Penalty amount 262 = Instalment amount
5004	Monetary amount	M	n..35		
Notes/Dependency descriptions:					
Example:					
MOA+201:100'					
This example indicates that the penalty amount is 100 Euros.					

<i>Number</i>	<i>Segment tag</i>	<i>Usage</i>	<i>Maximum number of repetitions</i>		
SG10	TDT	C	10		
23.	TDT – Details of transport	M	1		
<i>Function:</i>					
To specify the transport details such as mode of transport, means of transport, its conveyance reference number and the identification of the means of transport.					
<i>Data element tag</i>	<i>Name</i>	<i>Usage</i>	<i>Format</i>	<i>Example</i>	<i>Description/Code value</i>
8051	Transport stage code qualifier	M	an..3	20	20 = Main-carriage transport
8028	Means of transport journey identifier	N			
C220	MODE OF TRANSPORT	M	--	--	--
8067	Transport mode name code	M	an..3	30	10 = Maritime transport 20 = Rail transport 30 = Road transport 40 = Air transport 60 = Multimodal transport
C228	TRANSPORT MEANS	C	--	--	--
8179	Transport means description code	D	an..8	31	23 = Rail bulk car 25 = Rail express 31 = Truck X05 = Road parcel express X09 = Parcel post X11 = Surface mail X13 = Air mail
8178	Transport means description	N			
C040	CARRIER	C			
3127	Carrier identifier	M	an..17		GLN – Format n13
1131	Code list identification code	N			
3055	Code list responsible agency code	D	an..3	9	9 = EAN
3128	Carrier name	C	an..35		
Notes/Dependency descriptions:					
This segment is used to specify transport instructions for the whole Purchase Order, such as requesting an express transport service. The GLN of the carrier can be provided here. Data Elements 8179 is only used when the type of transport must be specifically identified, that is, a generic description such as road transport is unsuitable.					
Example:					
TDT+20++30+31'					
This example indicates the transport mode is rail and the transport means is truck.					

<i>Number</i>	<i>Segment tag</i>	<i>Usage</i>	<i>Maximum number of repetitions</i>		
SG12	TOD	C	5		
26.	TOD – Terms of delivery or transport	M	1		
<i>Function:</i>					
To specify terms of delivery or transport.					
<i>Data element tag</i>	<i>Name</i>	<i>Usage</i>	<i>Format</i>	<i>Example</i>	<i>Description/Code value</i>
4055	Delivery or transport terms function code	M	an..3	3	2 = Despatch condition 3 = Price and despatch condition 4 = Collected by customer 6 = Delivery condition 10E = Delivered by supplier
4215	Transport charges payment method code	C	an..3	PP	CC = Collect PP = Prepaid WD = Paid by supplier WE = Paid by buyer
C100	TERMS OF DELIVERY OR TRANSPORT	C	--	--	Data elements 1131 and 3055 are only used if specific terms of delivery codes, which are outside those recommended by EDIFACT, are being used.
4053	Delivery or transport terms description code	M	an..3		INCOTERMS
1131	Code list identification code	D	an..17	2E	1E = Incoterms 1990 2E = Incoterms 2000
3055	Code list responsible agency code	D	an..3	9	Code specifying the agency responsible for a code list. 9 = EAN
Notes/Dependency descriptions:					
This segment is used to specify the terms of delivery for the complete order.					
Example:					
TOD+3++CIF:2E:9'					
This example indicates the Cost, Insurance, Freight to named destination.					

<i>Number</i>	<i>Segment tag</i>	<i>Usage</i>	<i>Maximum number of repetitions</i>		
SG19	ALC-SG21-SG22	C	99		
34.	ALC – Allowance or charge	M	1		
<i>Function:</i>					
To identify allowance or charge details.					
<i>Data element tag</i>	<i>Name</i>	<i>Usage</i>	<i>Format</i>	<i>Example</i>	<i>Description/Code value</i>
5463	Allowance or charge code qualifier	M	an..3		A = Allowance C = Charge
C552	ALLOWANCE/ CHARGE INFORMATION	C			
1230	Allowance or charge identifier	D	an..35		
5189	<i>Allowance or charge identification code</i>	<i>N</i>			
4471	<i>Settlement means code</i>	<i>N</i>			
1227	Calculation sequence code	D	an..3		1 = First step of calculation 2 = Second step of calculation etc...
C214	SPECIAL SERVICES IDENTIFICATION	D			This composite is only used if the buyer knows the type of allowance or charge.
7161	Special service description code	M	an..3		TD = Trade discount ABH = Throughput allowance EAB = Early payment allowance PC = Packing SH = Special handling service IN = Insurance
Notes/Dependency descriptions:					
<p>This segment is used to specify any allowances or charges related to the complete order. If allowances and charges are applicable for a specific line item then they must be indicated using segment group 43. As the calculation price type (data element 5125 PRI segment) used in the purchase order is always a net price, allowances and/or charges specified in the ALC segment are for information purposes only. The use of this code value excludes the specification of this code value at the line level.</p>					
Example:					
ALC+A++++TD'					
This example indicates an allowance (trade discount).					



1 Oct 2008

<i>Number</i>	<i>Segment tag</i>	<i>Usage</i>	<i>Maximum number of repetitions</i>		
SG19	ALC-SG21-SG22	C	99		
SG21	PCD	C	1		
39.	PCD – Percentage details	M	1		
<i>Function:</i>					
To specify percentage information.					
<i>Data element tag</i>	<i>Name</i>	<i>Usage</i>	<i>Format</i>	<i>Example</i>	<i>Description/Code value</i>
C501	PERCENTAGE DETAILS	M	--	--	
5245	Percentage type code qualifier	M	an..3	3	3 = Allowance or charge
5482	Percentage	M	n..10	1.25	
Notes/Dependency descriptions:					
This segment is used to specify percentage allowance/charge information.					
Example:					
PCD+3:1.25'					



1 Oct 2008

<i>Number</i>	<i>Segment tag</i>	<i>Usage</i>	<i>Maximum number of repetitions</i>		
SG19	ALC-SG21-SG22	C	99		
SG22	MOA	C	1		
41.	MOA – Monetary amount	M	1		
<i>Function:</i>					
To specify a monetary amount.					
<i>Data element tag</i>	<i>Name</i>	<i>Usage</i>	<i>Format</i>	<i>Example</i>	<i>Description/Code value</i>
C516	MONETARY AMOUNT	M			
5025	Monetary amount type code qualifier	M	an..3	8	8 = Allowance or charge amount
5004	Monetary amount	M	n..35		
Notes/Dependency descriptions:					
This segment is used to specify allowance/charge amount.					
Example:					
MOA+8:500'					

Segments of detail section

Number	Segment tag	Usage	Maximum number of repetitions
SG28	LIN-PIA-IMD-MEA-QTY-DTM-MOA-FTX-SG32-SG33-SG34-SG37-SG38-SG43	C	200000
47.	LIN – Line item	M	1

Function:

To identify a line item and configuration.

Data element tag	Name	Usage	Format	Example	Description/Code value
1082	Line item identifier	M	an..6	1	
1229	Action request/notification description code	N			
C212	ITEM NUMBER IDENTIFICATION	D	--	--	--
7140	Item identifier	M	an..35	5412345123453	GTIN - this is the number of the article being despatched.
7143	Item type identification code	M	an..3	SRV	SRV = EAN.UCC Global Trade Item Number

Notes/Dependency descriptions:

DE C212: This composite is only used for the identification of EAN/UPC codes. If another coding structure is required, e.g. HIBC, this composite will not be used and the code will be detailed in the PIA segment.

Example:

LIN+1++5412345111115:SRV'

This example indicates that the GTIN ordered is 5412345111115.



<i>Number</i>	<i>Segment tag</i>	<i>Usage</i>	<i>Maximum number of repetitions</i>		
SG28	LIN-PIA-IMD-MEA-QTY-DTM-MOA-FTX-SG32-SG33-SG34-SG37-SG38-SG43	C	200000		
48.	PIA – Additional product id	C	25		
<i>Function:</i>					
To specify additional item identification codes.					
<i>Data element tag</i>	<i>Name</i>	<i>Usage</i>	<i>Format</i>	<i>Example</i>	<i>Description/Code value</i>
4347	Product identifier code qualifier	M	an..3	1	1 = Additional identification To provide an additional identity for the product identified in the LIN segment. The additional identification can consist of : A supplemental identification which provides more information complementary to the main trade item number provided in the LIN segment, e.g., a batch number, promotional variant number, product group number, etc.
C212	ITEM NUMBER IDENTIFICATION	M	--	--	--
7140	Item identifier	M	an..35	ABF5682	
7143	Item type identification code	M	an..3	NB	IN = Buyer's item number SA = Supplier's item number NB = Batch number SN = Serial number PV = Promotional variant number
Notes/Dependency descriptions:					
This segment is used to identify additional product codes for the current line item. To provide an additional identity for the primary article number identified in the LIN segment.					
Example:					
PIA+1+563985:IN'					
This example indicates an additional identification to the trade item number provided in the LIN segment. The additional identification is the buyer's article number identified by 563985.					

<i>Number</i>	<i>Segment tag</i>	<i>Usage</i>	<i>Maximum number of repetitions</i>		
SG28	LIN-PIA-IMD-MEA-QTY-DTM-MOA-FTX-SG32-SG33-SG34-SG37-SG38-SG43	C	200000		
49.	IMD – Item description	C	99		
<i>Function:</i>					
To describe an item in either an industry or free format.					
<i>Data element tag</i>	<i>Name</i>	<i>Usage</i>	<i>Format</i>	<i>Example</i>	<i>Description/Code value</i>
7077	Description format code	M	an..3	F	F = Free-form B = Code and text C = Code (from industry code list) E = Free form short description
C272	Item characteristic	C			
7081	Item characteristic code	M	an..3	DSC	ANM = Article name (EAN code) BRN = Brand name (EAN code) DSC = Description (EAN code) SGR = Size grid (EAN code) 35 = Colour 98 = Size
1131	Code list identification code	N			
3055	Code list responsible agency code	M	an..3	9	9 = EAN (International Article Numbering Association)
C273	Item description	C	--	--	--
7009	Item description code	D	an..3		CU = Consumer unit DU = Despatch unit TU = Traded unit VQ = Variable quantity product SER = Service ORU = Ordering unit MOD = Model
1131	Code list identification code	N			
3055	Code list responsible agency code	D	an..3		91 = Assigned by supplier or supplier's agent 92 = Assigned by buyer or buyer's agent
7008	Item description	M	an..256		
7008	Item description	N	an..256		
3453	Language name code	C	an..3		ISO 639 two alpha code
Notes/Dependency descriptions:					
This segment is used to describe the current line item. It is recommended to use this segment only for coded descriptions. Data element 7008 in clear text should only be used when no product code is available or when free-form descriptions are required by					

trading partners.

Example:

IMD+F+ANM::9+:::CORN CRISPIES'

This example indicates the ordered item has the name CORN CRISPIES

IMD+C++CU:::9'

This example indicates that the GTIN is a consumer unit.

IMD+F++:::RED'

This example indicates the ordered item has the colour name RED.

IMD+E+BRN::9+:::MARS'

This example indicates the ordered item has the brand name MARS

<i>Number</i>	<i>Segment tag</i>	<i>Usage</i>	<i>Maximum number of repetitions</i>		
SG28	LIN-PIA-IMD-MEA-QTY-DTM-MOA-FTX-SG32-SG33-SG34-SG37-SG38-SG43	C	200000		
50.	MEA – Measurements	C	99		
<i>Function:</i>					
To specify physical measurements, including dimension tolerances, weights and counts.					
<i>Data element tag</i>	<i>Name</i>	<i>Usage</i>	<i>Format</i>	<i>Example</i>	<i>Description/Code value</i>
6311	Measurement purpose code qualifier	M	an..3	PD	PD = Physical dimensions (product ordered)
C502	MEASUREMENT DETAILS	M	--	--	--
6313	Measured attribute code	M	an..3	ABJ	AEA = Loading height AEB = Stacking height DP = Depth HT = Height dimension LN = Length dimension OD = Outside diameter RA = Relative humidity TC = Temperature WD = Width dimension A = Consolidated weight AAA = Unit net weight AAB = Unit gross weight AAC = Total net weight AAD = Total gross weight AAF = Net net weight ADZ = Declared net weight ABJ = Volume AAX = Net volume
6321	Measurement significance code	M	an..3		3 = Approximately 4 = Equal to
6155	Non-discrete measurement name code	D	an..17		42 = Uncontrolled temperature 43 = Chilled 44 = Frozen 45 = Temperature controlled
C174	VALUE/RANGE	M	--	--	--
6411	Measurement unit code	M	an..3	LTR	CMT = centimetre GRM = gram MMT = millimetre MTR = metre LTR = litre MTQ = cubic metre
6314	Measurement value	M	an..18		
6162	Range minimum value	D	n..18		



1 Oct 2008

6152	Range maximum value	D	n..18		
6432	Significant digits quantity	C	n..2		

Notes/Dependency descriptions:

This segment is used to specify the actual physical dimensions of the product being ordered where that product is sold in variable lengths or volumes. Also, this segment can be indicated to provide transport/storage measurements like temperature, volumes.

This segment must be used in conjunction with the LIN segment for the precise identification of the ordered product.

The data element 6155 will be used only if the data element 6313 contains the code TC (temperature).

The specification of the DE 6314 excludes the use of the DE 6162 and 6152.

The specification of the DE6162 and 6152 exclude the use of the DE 6314.

The code indicated in the data element 6411 is an example. It is an open codes list. For this data element, all codes available in EANCOM can be used.

Example:

MEA+PD+LN:4+MTR:4.5'

The precise length of the product identified by the GTIN 5412345111115 is 4.5 metres.

MEA+PD+AAA+KGM:4.5'

The unit net weight of the product identified by the GTIN 5412345111115 is 4.5 kilogram.

<i>Number</i>	<i>Segment tag</i>	<i>Usage</i>	<i>Maximum number of repetitions</i>		
SG28	LIN-PIA-IMD-MEA-QTY-DTM-MOA-FTX-SG32-SG33-SG34-SG37-SG38-SG43	C	200000		
51.	QTY – Quantity	C	99		
<i>Function:</i>					
To specify a pertinent quantity.					
<i>Data element tag</i>	<i>Name</i>	<i>Usage</i>	<i>Format</i>	<i>Example</i>	<i>Description/Code value</i>
C186	QUANTITY DETAILS	M	--	--	--
6063	Quantity type code qualifier	M	an..3	21	21 = Ordered quantity 59 = Number of consumer units in the traded unit 164 = Delivery batch 192 = Free goods quantity
6060	Quantity	M	an..35	48	
6411	Measurement unit code	D	an..3		KGM = kilogram
Notes/Dependency descriptions:					
<p>The code indicated for the data element 6063 is a restricted code.</p> <p>The code indicated in the data element 6411 is an example. It is an open code list. For this data element, all codes available in EANCOM can be used.</p> <p>If split deliveries are being used, the quantities for the split delivery are specified in segment group 37. The totals for all quantities expressed in the QTY's at segment group level must equal the value in this QTY segment.</p>					
Example:					
QTY+21:48'					
This example indicates the ordered quantity is 48 pieces.					

<i>Number</i>	<i>Segment tag</i>	<i>Usage</i>	<i>Maximum number of repetitions</i>		
SG28	LIN-PIA-IMD-MEA-QTY-DTM-MOA-FTX-SG32-SG33-SG34-SG37-SG38-SG43	C	200000		
53.	DTM – Date/time/period	C	35		
<i>Function:</i>					
To specify date, and/or time, or period.					
<i>Data element tag</i>	<i>Name</i>	<i>Usage</i>	<i>Format</i>	<i>Example</i>	<i>Description/Code value</i>
C507	DATE/TIME/PERIOD	M	--	--	--
2005	Date or time or period function code qualifier	M	an..3	63	2 = Delivery date/time, requested 63 = Delivery date/time, latest 64 = Delivery date/time, earliest 200 = Pick-up/collection date/time of cargo 364 = Minimum shelf life remaining at time of despatch period
2380	Date or time or period value	M	an..35	20071001	
2379	Date or time or period format code	M	an..3	102	102 = CCYYMMDD 203 = CCYYMMDDHHMM 718 = CCYYMMDD-CCYYMMDD 804 = Day
Notes/Dependency descriptions:					
This segment is primarily used to specify the dates (and possibly times) associated with the delivery or collection of the currently identified product. Also other relevant The format date must be indicated in the message implementation guide.					
Example:					
DTM+2:20071001:102' This example requests delivery on the 1st of October 2007.					



<i>Number</i>	<i>Segment tag</i>	<i>Usage</i>	<i>Maximum number of repetitions</i>		
SG28	LIN-PIA-IMD-MEA-QTY-DTM-MOA-FTX-SG32-SG33-SG34-SG37-SG38-SG43	C	200000		
54.	MOA – Monetary amount	C	10		
<i>Function:</i>					
To specify a monetary amount.					
<i>Data element tag</i>	<i>Name</i>	<i>Usage</i>	<i>Format</i>	<i>Example</i>	<i>Description/Code value</i>
C516	MONETARY AMOUNT	M	--	--	--
5025	Monetary amount type code qualifier	M	an..3	203	203 = Line item amount
5004	Monetary amount	M	n..35		
Notes/Dependency descriptions:					
This segment is used for two purposes, firstly, when allowances/charges are involved, to indicate net amounts for the line, and secondly, to provide valuation amounts, e.g., customs value. The code 203 (line item amount) allows to indicate goods item total minus allowances plus charges for line item.					
Example:					
MOA+203:1253.42'					
This example indicates the line item amount: 1253.42 Euros.					

<i>Number</i>	<i>Segment tag</i>	<i>Usage</i>	<i>Maximum number of repetitions</i>		
SG28	LIN-PIA-IMD-MEA-QTY-DTM-MOA-FTX-SG32-SG33-SG34-SG37-SG38-SG43	C	200000		
57.	FTX – Free text	C	99		
<i>Function:</i>					
To provide free form or coded text information.					
<i>Data element tag</i>	<i>Name</i>	<i>Usage</i>	<i>Format</i>	<i>Example</i>	<i>Description/Code value</i>
4451	Text subject code qualifier	M	an..3	ZZZ	AAI = General information DEL = Delivery information PUR = Purchasing information ZZZ = Mutually defined
4453	Free text function code	C	an..3	1	1 = Text for subsequent use 3 = Text for immediate use
C107	TEXT REFERENCE	D	--	--	This composite is only used when trading partners have agreed to use mutually defined code values.
4441	Free text value code	M	an..17	001	001 = Standard text
1131	Code list identification code	N	an..17		
3055	Code list responsible agency code	C	an..3	91	91 = Assigned by supplier or supplier's agent 92 = Assigned by buyer or buyer's agent
C108	TEXT LITERAL	D	--	--	This composite is only used if coded text can not be used.
4440	Free text value	M	an..512		
4440	Free text value	C	an..512		
4440	Free text value	C	an..512		
4440	Free text value	C	an..512		
4440	Free text value	C	an..512		
3453	Language name code	D	an..3		ISO 639 two alpha code This data element is only used when non coded free text has been provided in data element C108.
Notes/Dependency descriptions:					
<p>This segment is used to provide free form or coded text information.</p> <p>Use of this segment in free form is not recommended since it may inhibit automatic processing of the Order. Coded references to standard texts are an available functionality which enables automatic processing and reduces transmission and processing overheads. Standard texts should be mutually defined between trading partners and can be used to cover legal or other requirements.</p>					
Example:					
FTX+PUR+1+001::91'					
This example indicates a purchasing information (e.g. standard text code 001=Special prices effective first of month)					



1 Oct 2008

<i>Number</i>	<i>Segment tag</i>	<i>Usage</i>	<i>Maximum number of repetitions</i>		
SG28	LIN-PIA-IMD-MEA-QTY-DTM-MOA-FTX-SG32-SG33-SG34-SG37-SG38-SG43	C	200000		
SG32	PRI-CUX-DTM	C	25		
58.	PRI – Price details	M	1		
<i>Function:</i>					
To specify price information.					
<i>Data element tag</i>	<i>Name</i>	<i>Usage</i>	<i>Format</i>	<i>Example</i>	<i>Description/Code value</i>
C509	PRICE INFORMATION	M	--	--	--
5125	Price code qualifier	M	an..3	AAA	AAA = Calculation net
5118	Price amount	M	n..15		
5375	Price type code	C	an..3	CA	CA = Catalogue CT = Contract
5387	Price specification code	C	an..3	LIU	LIU = List price LBL = Labelling price PRP = Promotional price INV = Invoice price SRP = Suggested retail price
5284	Unit price basis value	D	n..9		Number of units for which unit price applies if not one.
6411	Measurement unit code	D	an..3		KGM = kilogram This DE is only used if the product ordered is a variable quantity product
Notes/Dependency descriptions:					
<p>This segment is used to detail the price for the current product identified in the LIN segment. The calculation price detailed in the Purchase Order will always be the Net Unit Price, i.e., Gross Price + Charges - Allowances.</p> <p>Data elements 5284 and 6411 are used when a product is a variable quantity product, e.g. price per 200 kilos, or when the unit of measure for purchasing, delivery, and invoicing are different for a product, e.g. sugar is not a variable quantity product but ordered and delivered in packs, and invoiced in kilos or tonnes.</p>					
Example:					
<p>PRI+AAA:14.58'</p> <p>This example indicates a net price including allowances and charges but excluding taxes.</p> <p>PRI+AAA:14.58::LIU'</p> <p>This example indicates a net list price (including allowances and charges but excluding taxes, no promotion or special discounts applied)</p>					

<i>Number</i>	<i>Segment tag</i>	<i>Usage</i>	<i>Maximum number of repetitions</i>		
SG28	LIN-PIA-IMD-MEA-QTY-DTM-MOA-FTX-SG32-SG33-SG34-SG37-SG38-SG43	C	200000		
SG32	PRI-CUX-DTM	C	25		
59.	CUX – Currencies	C	1		
<i>Function:</i>					
To specify currencies used in the transaction and relevant details for the rate of exchange.					
<i>Data element tag</i>	<i>Name</i>	<i>Usage</i>	<i>Format</i>	<i>Example</i>	<i>Description/Code value</i>
C504	CURRENCY DETAILS	M	--	--	
6347	Currency details qualifier	M	an..3	2	2 = Reference currency
6345	Currency, coded	M	an..3	HUF	ISO 4217 three alpha
6343	Currency qualifier	M	an..3	4	10 = Pricing currency
Notes/Dependency descriptions:					
<p>This segment is used to specify currency data related to the previous PRI segment.</p> <p>When specifying Reference and Target Currencies for international trade, one occurrence of CUX is all that is required. The reference currency is identified in the first occurrence of composite C504, with the target currency specified in the second occurrence of C504.</p>					
Example:					
CUX+2:USD:9'					
This example indicates the order currency US Dollar					



1 Oct 2008

<i>Number</i>	<i>Segment tag</i>	<i>Usage</i>	<i>Maximum number of repetitions</i>		
SG28	LIN-PIA-IMD-MEA-QTY-DTM-MOA-FTX-SG32-SG33-SG34-SG37-SG38-SG43	C	200000		
SG32	PRI-CUX-DTM	C	25		
60.	DTM – Date/time/period	C	5		
<i>Function:</i>					
To specify date, and/or time, or period.					
<i>Data element tag</i>	<i>Name</i>	<i>Usage</i>	<i>Format</i>	<i>Example</i>	<i>Description/Code value</i>
C507	DATE/TIME/PERIOD	M	--	--	--
2005	Date or time or period function code qualifier	M	an..3	63	21E = End validity date
2380	Date or time or period value	M	an..35	20081231	
2379	Date or time or period format code	M	an..3	102	102 = CCYYMMDD
Notes/Dependency descriptions:					
This segment is used to specify the dates (and possibly times) associated with the price of the currently identified product.					
Example:					
DTM+21E:20081231:102'					
This example indicates the end validity date : DECEMBER, 31st, 2008					



<i>Number</i>	<i>Segment tag</i>	<i>Usage</i>	<i>Maximum number of repetitions</i>		
SG28	LIN-PIA-IMD-MEA-QTY-DTM-MOA-FTX-SG32-SG33-SG34-SG37-SG38-SG43	C	200000		
SG33	RFF-DTM	C	9999		
61.	RFF – Reference	M	1		
<i>Function:</i>					
To specify a reference.					
<i>Data element tag</i>	<i>Name</i>	<i>Usage</i>	<i>Format</i>	<i>Example</i>	<i>Description/Code value</i>
C506	REFERENCE	M	--	--	--
1153	Reference code qualifier	M	an..3	UC	PD = Promotional deal number UC = Ultimate customer's reference number PL = Price list number
1154	Reference identifier	M	an..70		
Notes/Dependency descriptions:					
This segment is used to identify references associated with the line item. This information may override what is specified in the heading section when the same qualifier is used. This segment may also be used to allocate a unique reference number to this line item in this order.					
Example:					
RFF+PD:PRO46744' This example indicates the promotion deal number is PRO46744.					
RFF+UC:UC234' This example indicates the customer reference number UC234.					

<i>Number</i>	<i>Segment tag</i>	<i>Usage</i>	<i>Maximum number of repetitions</i>		
SG28	LIN-PIA-IMD-MEA-QTY-DTM-MOA-FTX-SG32-SG33-SG34-SG37-SG38-SG43	C	200000		
SG33	RFF-DTM	C	9999		
62.	DTM – Date/time/period	C	5		
<i>Function:</i>					
To specify date, and/or time, or period.					
<i>Data element tag</i>	<i>Name</i>	<i>Usage</i>	<i>Format</i>	<i>Example</i>	<i>Description/Code value</i>
C507	DATE/TIME/PERIOD	M			
2005	Date or time or period function code qualifier	M	an..3		171 = Reference date/time
2380	Date or time or period value	M	an..35		
2379	Date or time or period format code	M	an..3		102 = CCYYMMDD 718 = CCYYMMDD- CCYYMMDD
Notes/Dependency descriptions:					
This segment is used to specify dates and times associated with the preceding RFF segment. The format date must be indicated in the message implementation guide.					
Example:					
DTM+171:20070801:102'					



Number	Segment tag	Usage	Maximum number of repetitions
SG28	LIN-PIA-IMD-MEA-QTY-DTM-MOA-FTX-SG32-SG33-SG34-SG37-SG38-SG43	C	200000
SG34	PAC-SG36	C	99
63.	PAC – Package	M	1

Function:

To describe the number and type of packages/physical units.

Data element tag	Name	Usage	Format	Example	Description/Code value
7224	Package quantity	C	n..8	10	
C531	PACKAGING DETAILS	C	--	--	--
7075	Packaging level code	N			
7233	Packaging related description code	M	an..3	50	50 = Package barcoded EAN-13 or EAN-8 51 = Package barcoded ITF-14 52 = Package barcoded UCC or EAN-128
7073	Packaging terms and conditions code	N			
C202	PACKAGE TYPE	C	--	--	--
7065	Package type description code	C	an..17	BX	BX = Box CR = Crate CS = Case CT = Carton 201 = Pallet ISO 1 – 1/1 EURO Pallet (EAN Code) BME = Blister pack (EAN code)
1131	Code list identification code	N			
3055	Code list responsible agency code	D	an..3	9	9 = EAN Code value 9 is only used if DE 7065 contains an EAN code.

Notes/Dependency descriptions:

This segment is used to define the number, the type and the description of the package to be delivered.

Example:

PAC+4++CS'

This example indicates to pack the 48 units ordered in the QTY at LIN level into 4 cases, i.e. into despatch units containing 12 ordered units each.

PAC+9+:50+BX+1'

This example indicates that the ordered quantity in the QTY at LIN level will be delivered in 9 boxes marked with EAN-13 and the return of the packaging will be paid by the customer.

<i>Number</i>	<i>Segment tag</i>	<i>Usage</i>	<i>Maximum number of repetitions</i>		
SG28	LIN-PIA-IMD-MEA-QTY-DTM-MOA-FTX-SG32-SG33-SG34-SG37-SG38-SG43	C	200000		
SG34	PAC-SG36	C	99		
SG36	PCI	C	5		
65.	PCI – Package identification	M	1		
<i>Function:</i>					
To specify markings and labels on individual packages or physical units.					
<i>Data element tag</i>	<i>Name</i>	<i>Usage</i>	<i>Format</i>	<i>Example</i>	<i>Description/Code value</i>
4233	Marking instructions code	M	an..3	16	16 = Buyer's instructions
C210	MARKS & LABELS	M	--	--	--
7102	Shipping marks description	M	an..35		Article surveillance type, code
7102	Shipping marks description	C	an..35		Article surveillance type, description
Notes/Dependency descriptions:					
This segment is used to provide markings and labels information relevant to the product identified in the LIN segment.					
The use of DE 7102 must be bilaterally agreed.					
Example:					
PCI+16+Code:DESCR'					
This example indicates an article surveillance information					

<i>Number</i>	<i>Segment tag</i>	<i>Usage</i>	<i>Maximum number of repetitions</i>		
SG28	LIN-PIA-IMD-MEA-QTY-DTM-MOA-FTX-SG32-SG33-SG34-SG37-SG38-SG43	C	200000		
SG37	LOC-QTY	C	9999		
69.	LOC – Place/location identification	M	1		
<i>Function:</i>					
To identify a place or a location and/or related locations.					
<i>Data element tag</i>	<i>Name</i>	<i>Usage</i>	<i>Format</i>	<i>Example</i>	<i>Description/Code value</i>
3227	Location function code qualifier	M	an..3	7	7 = Place of delivery
C517	LOCATION IDENTIFICATION	C	--	--	--
3225	Location name code	C	an..25		Use GLN - Format n13.
1131	Code list identification code	C	an..3		
3055	Code list responsible agency code	M	an..3	9	9 = EAN
Notes/Dependency descriptions:					
This segment is used to indicate more precise locations related to the party identified in the NAD segment. It is recommended that GLN -Format n13 - be used for the identification of all locations					
Example:					
LOC+7+4012345500004::9'					
This example indicates that the delivery location GLN is 4012345500004.					

<i>Number</i>	<i>Segment tag</i>	<i>Usage</i>	<i>Maximum number of repetitions</i>		
SG28	LIN-PIA-IMD-MEA-QTY-DTM-MOA-FTX-SG32-SG33-SG34-SG37-SG38-SG43	C	200000		
SG37	LOC-QTY	C	9999		
70.	QTY – Quantity	C	1		
<i>Function:</i>					
To specify a pertinent quantity.					
<i>Data element tag</i>	<i>Name</i>	<i>Usage</i>	<i>Format</i>	<i>Example</i>	<i>Description/Code value</i>
C186	QUANTITY DETAILS	M	--	--	--
6063	Quantity type code qualifier	M	an..3	11	11 = Split quantity
6060	Quantity	M	an..35	14	
6411	Measurement unit code	D	an..3		KGM = kilogram
Notes/Dependency descriptions:					
This segment is used to indicate the delivery quantity for the delivery location specified in the previous LOC segment. The total of all quantities specified in segment group 37 for the line, must equal the value for the total quantity detailed in the QTY segment at line level. DE 6411: This DE is only used if the current product is of variable quantity.					
Example:					
QTY+11:14' This example indicates the split quantity is 14 pieces.					



<i>Number</i>	<i>Segment tag</i>	<i>Usage</i>	<i>Maximum number of repetitions</i>		
SG28	LIN-PIA-IMD-MEA-QTY-DTM-MOA-FTX-SG32-SG33-SG34-SG37-SG38-SG43	C	200000		
SG38	TAX-MOA	C	10		
72.	TAX – Duty/tax/fee details	M	1		
<i>Function:</i>					
To specify relevant duty/tax/fee information.					
<i>Data element tag</i>	<i>Name</i>	<i>Usage</i>	<i>Format</i>	<i>Example</i>	<i>Description/Code value</i>
5283	Duty or tax or fee function code qualifier	M	an..3	7	7 = tax
C241	DUTY/TAX/FEE TYPE	M	--	--	
5153	Duty or tax or fee type name code	M	an..3	VAT	VAT = Value added tax OTH = Other ENV = Environment protection value
C533	DUTY/TAX/FEE ACCOUNT DETAIL	N	--	--	
5286	Duty or tax or fee assessment basis value	N			
C243	DUTY/TAX/FEE DETAIL	C	--	--	
5279	Duty or tax or fee rate code	N			
1131	Code list qualifier	N			
3055	Code list responsible agency code	N			
5278	Duty or tax or fee rate	M	an..17	20	The actual rate of tax/duty
5305	Duty or tax or fee category code	C	an..3	S	S = Standard rate Z = Zero (0%) rate E = Exempt from tax
Notes/Dependency descriptions:					
This segment is used to specify duty/tax/fee details for the line item identified in LIN. The use of this segment excludes the indication of the code value 7 at the header level. If this TAX segment is used here at detail section, the specification from the heading section is overwritten.					
Example:					
TAX+7+VAT++++:::20+S' - indication of 20 % VAT.					

<i>Number</i>	<i>Segment tag</i>	<i>Usage</i>	<i>Maximum number of repetitions</i>		
SG28	LIN-PIA-IMD-MEA-QTY-DTM-MOA-FTX-SG32-SG33-SG34-SG37-SG38-SG43	C	200000		
SG38	TAX-MOA	C	10		
73.	MOA – Monetary amount	C	1		
<i>Function:</i>					
To specify a monetary amount					
<i>Data element tag</i>	<i>Name</i>	<i>Usage</i>	<i>Format</i>	<i>Example</i>	<i>Description/Code value</i>
C516	MONETARY AMOUNT	M	--	--	
5025	Monetary amount type qualifier	M	an..3	124	124 = Tax amount 125 = Taxable amount
5004	Monetary amount	M	n..35		
Notes/Dependency descriptions:					
<p>This segment is used to indicate tax/taxable amount related to the preceding TAX segment. The taxable amount is the monetary amount liable to tax. The tax amount is the tax imposed by government or other official authority related to the weight/volume charge or valuation charge.</p>					
Example:					
MOA+124:324.55'					
This example indicates the tax amount : 324.55					

<i>Number</i>	<i>Segment tag</i>	<i>Usage</i>	<i>Maximum number of repetitions</i>
SG28	LIN-PIA-IMD-MEA-QTY-DTM-MOA-FTX-SG32-SG33-SG34-SG37-SG38-SG43	C	200000
SG43	ALC-SG44-SG45-SG46-SG47	C	99
77.	ALC - Allowance or charge	M	1

Function:

To identify allowance or charge details.

<i>Data element tag</i>	<i>Name</i>	<i>Usage</i>	<i>Format</i>	<i>Example</i>	<i>Description/Code value</i>
5463	Allowance or charge code qualifier	M	an..3	A	A = Allowance C = Charge
C552	ALLOWANCE/ CHARGE INFORMATION	C	--	--	--
1230	Allowance or charge identifier	D	an..35		
5189	Allowance or charge description code	N			
4471	Settlement, coded	N			
1227	Calculation sequence indicator code	C	an..3	1	1 = First step of calculation 2 = Second step of calculation etc. etc. 9 = Ninth step of calculation
C214	SPECIAL SERVICES IDENTIFICATION	D	--	--	This composite is only used if the buyer knows the type of allowance or charge.
7161	Special service description code	M	an..3	TD	TD = Trade discount ABH = Throughput allowance EAB = Early payment allowance PAD = Promotional allowance FI = Finance charge PC = Packing SH = Special handling service IN = Insurance

Notes/Dependency descriptions:

This segment is used to specify any allowances or charges which are applicable for the current line item. If allowances and charges are applicable for the same line item they must be indicated using separate repeats of segment group 43.

Example:

ALC+A++++TD'

This example indicates an allowance (trade discount).

ALC+C++++FI'

This example indicates a charge (finance charge).



<i>Number</i>	<i>Segment tag</i>	<i>Usage</i>	<i>Maximum number of repetitions</i>
SG28	LIN-PIA-IMD-MEA-QTY-DTM-MOA-FTX-SG32-SG33-SG34-SG37-SG38-SG43	C	200000
SG43	ALC-SG44-SG45-SG46-SG47	C	99
SG44	QTY	C	1
80.	QTY - Quantity	M	1

Function:

To specify a pertinent quantity.

<i>Data element tag</i>	<i>Name</i>	<i>Usage</i>	<i>Format</i>	<i>Example</i>	<i>Description/Code value</i>
C186	QUANTITY DETAILS	M	--	--	--
6063	Quantity type code qualifier	M	an..3	1	1 = Discrete quantity
6060	Quantity	M	an..35	14	
6411	Measurement unit code	D	an..3		KGM = kilogram This data element is only used if the current product is of variable quantity.

Notes/Dependency descriptions:

The code indicated for the data element 6063 is a restricted code.

This segment is used to specify quantity allowance/charge information.

Example:

QTY+1:14'

This example indicates the quantity allowance : 14 pieces

<i>Number</i>	<i>Segment tag</i>	<i>Usage</i>	<i>Maximum number of repetitions</i>		
SG28	LIN-PIA-IMD-MEA-QTY-DTM-MOA-FTX-SG32-SG33-SG34-SG37-SG38-SG43	C	200000		
SG43	ALC-SG44-SG45-SG46-SG47	C	99		
SG45	PCD	C	1		
82.	PCD – Percentage details	M	1		
<i>Function:</i>					
To detail percentage information.					
<i>Data element tag</i>	<i>Name</i>	<i>Usage</i>	<i>Format</i>	<i>Example</i>	<i>Description/Code value</i>
C501	PERCENTAGE DETAILS	M	--	--	
5245	Percentage qualifier	M	an..3	3	3 = allowance or charge
5482	Percentage	M	n..10	1.25	
Notes/Dependency descriptions:					
This segment is used to specify allowance/charge percentage.					
Example:					
PCD+3:1.25'					
This example indicates the allowance percentage because the data element 5463 of the segment ALC contains the value A (Allowance). The allowance percentage is 1.25 %					

<i>Number</i>	<i>Segment tag</i>	<i>Usage</i>	<i>Maximum number of repetitions</i>		
SG28	LIN-PIA-IMD-MEA-QTY-DTM-MOA-FTX-SG32-SG33-SG34-SG37-SG38-SG43	C	200000		
SG43	ALC-SG44-SG45-SG46-SG47	C	99		
SG46	MOA	C	2		
84.	MOA – Monetary amount	M	1		
Function:					
To specify a monetary amount.					
<i>Data element tag</i>	<i>Name</i>	<i>Usage</i>	<i>Format</i>	<i>Example</i>	<i>Description/Code value</i>
C516	MONETARY AMOUNT	M	--	--	--
5025	Monetary amount type code qualifier	M	an..3		8 = Allowance or charge amount
5004	Monetary amount	M	n..35		
Notes/Dependency descriptions:					
This segment is used to specify allowance/charge amount.					
Example:					
MOA+8:500'					
This example indicates the allowance amount because the data element 5463 of the segment ALC contains the value A (Allowance). The allowance amount is 500					

<i>Number</i>	<i>Segment tag</i>	<i>Usage</i>	<i>Maximum number of repetitions</i>
SG28	LIN-PIA-IMD-MEA-QTY-DTM-MOA-FTX-SG32-SG33-SG34-SG37-SG38-SG43	C	200000
SG43	ALC-SG44-SG45-SG46-SG47	C	99
SG47	RTE	C	1
86.	RTE – Rate details	M	1

Function:

To specify rate information.

<i>Data element tag</i>	<i>Name</i>	<i>Usage</i>	<i>Format</i>	<i>Example</i>	<i>Description/Code value</i>
C128	RATE DETAILS	M	--	--	--
5419	Rate type code qualifier	M	an..3	1	1 = Allowance rate 2 = Charge rate
5420	Unit price basis rate	M	n..15	5.5	
5284	Unit price basis value	M	n..9		
6411	Measurement unit code	C	an..3		KGM = kilogram This data element is only used if the current product is of variable quantity.

Notes/Dependency descriptions:

This segment is used to specify allowance/charge rate per unit.

Example:

RTE+1:5.5'

This example indicates the allowance rate : 5.5%

RTE+2:4.5'

This example indicates the charge rate : 4.5%

Segments of summary section

<i>Number</i>	<i>Segment tag</i>	<i>Usage</i>	<i>Maximum number of repetitions</i>		
91.	UNS – Section control	M	1		
<i>Function:</i>					
To separate header, detail and summary sections of a message.					
<i>Data element tag</i>	<i>Name</i>	<i>Usage</i>	<i>Format</i>	<i>Example</i>	<i>Description/Code value</i>
0081	Section identification	M	a1	S	S = Detail/summary section separation
Notes/Dependency descriptions:					
This segment is used to identify the break between the message detail and message summary sections.					
Example:					
UNS+S'					

<i>Number</i>	<i>Segment tag</i>	<i>Usage</i>	<i>Maximum number of repetitions</i>		
92.	MOA – Monetary amount	C	99		
<i>Function:</i>					
To specify a monetary amount.					
<i>Data element tag</i>	<i>Name</i>	<i>Usage</i>	<i>Format</i>	<i>Example</i>	<i>Description/Code value</i>
C516	MONETARY AMOUNT	M	--	--	--
5025	Monetary amount type code qualifier	M	an..3		79 = Total line items amount
5004	Monetary amount	M	n..35		
Notes/Dependency descriptions:					
This segment is used to indicate total amounts for the order.					
Example:					
MOA+79:15000'					

<i>Number</i>	<i>Segment tag</i>	<i>Usage</i>	<i>Maximum number of repetitions</i>		
93.	CNT – Control total	C	10		
<i>Function:</i>					
To provide control total.					
<i>Data element tag</i>	<i>Name</i>	<i>Usage</i>	<i>Format</i>	<i>Example</i>	<i>Description/Code value</i>
C270	CONTROL	M	--	--	--
6069	Control total type code qualifier	M	an..3	2	2 = Number of line items in message
6066	Control total value	M	n..18		
Notes/Dependency descriptions:					
This segment is used to provide message control information for checking on the message receiver's in-house system.					
Example:					
CNT+2:4' There are four LIN segments in the current message.					

<i>Number</i>	<i>Segment tag</i>		<i>Usage</i>	<i>Maximum number of repetitions</i>	
94.	UNT – Message trailer		M	1	
<i>Function:</i>					
To end and check the completeness of a message.					
<i>Data element tag</i>	<i>Name</i>	<i>Usage</i>	<i>Format</i>	<i>Example</i>	<i>Description/Code value</i>
0074	Number of segments in a message	M	n..6		The total number of segments in the message is detailed here.
0062	Message reference number	M	an..14	ME000001	The message reference numbered detailed here should equal the one specified in the UNH segment.
Notes/Dependency descriptions:					
This segment is a mandatory UN/EDIFACT segment. It must always be the last segment in the message.					
Example:					
UNT+112+ME000001' The message contains 112 segments.					



Examples

The following is an example of a simple purchase order for one line item between a buyer identified by GLN 5412345000013 and a supplier identified by GLN 4012345500004.

The order is placed the 30th August 2002. It is based on a contract drawn 25th August 2002 with reference 652744. The purchase order buyer's reference is 128576.

The buyer orders 48 units of the product identified by GTIN 400862141404 at a net unit price of 14.58 pounds sterling for a total item amount of 699.84 pounds sterling. The net unit price for the product is covered by a contract specific to that product dated the 1st August 2002 with a reference number of AUG93RNG04.

A currency exchange rate of 1.67 Euros to a one pound sterling valid for the month of August 2002 is specified. The product is a standard rated VAT item with a VAT rate of 17.5%. The buyer's internal product code for the product is identified as ABC1234.

The buyer requests that the seller mark the expiry date for the products on the product packaging. The delivery of the product is requested for two locations. Both locations are to get 24 pieces, location 3312345502000 has requested delivery for the 15th of September 2002, and location 3312345501003 has requested delivery for 13th of September 2002.

Purchase Order message:

UNH+ME000001+ORDERS:D:01B:UN:EAN010'	Message header
BGM+220+128576+9'	Order number 128576
DTM+137:20020830:102'	Message date 30th of August 2002
PAI+::42'	Instruction to pay in Bank Account
ALI+++136'	Group conditions apply to the entire ORDER
FTX+ZZZ+1+001::91'	Free text mutually defined
RFF+CT:652744'	Order is based on contract number 652744
DTM+171:20020825:102'	Date of contract 25th of August 2002
NAD+BY+5412345000013::9'	Buyer is identified by GLN 5412345000013
RFF+VA:87765432'	Buyer's VAT number is 87765432
CTA+OC+:P FORGET'	Order contact is P Forget
COM+0044715632478:TE'	Telephone number of order contact
NAD+SU+4012345500004::9'	Supplier is identified by GLN 4012345500004
RFF+VA:56225432'	Supplier's VAT number is 56225432
CUX+2:GBP:9+3:EUR:4+1.67'	Ordering currency is Pounds Sterling with the invoicing currency identified as Euros The exchange rate between them is 1 Pound Sterling equals 1.67 Euros
DTM+134:2002080120020831:718'	Period on which rate of exchange date is based is the 1st of August 2002 - 31st of August 2002
TDT+20++30+31'	Order requests that the main carriage transport used to deliver the goods is a truck
TOD+3++CIF:2E:9'	Terms of delivery are to be Cost, Insurance and Freight
LOC+1+BE-BRU'	The named port is Brussels
LIN+1++4000862141404:SRV'	First product order is identified by the GTIN 4000862141404
PIA+1+ABC1234:IN'	In addition the buyer's part number ABC1234 is provided
IMD+C++TU::9'	The ordered item is a traded unit



15 Aug 2008

QTY+21:48'
MOA+203:699.84'
PRI+AAA:14.58:CT:AAE:1:KGM'
RFF+PL:AUG93RNG04'
DTM+171:20020801:102'
PAC+2+:51+CS'
PCI+14'

LOC+7+3312345502000::9'

QTY+11:24'
DTM+2:20020915:102'

LOC+7+3312345501003::9'

QTY+11:24'
DTM+2:20020913:102'

TAX+7+VAT+++:::17.5+S'

UNS+S'
CNT+2:1'
UNT+39+ME000001'

Ordered quantity is 48 units
Value of order line is 699.84 Pounds Sterling
Fixed net calculation price is 14.58 Pounds Sterling
Price is taken from the price list AUG93RNG04
Price list date 1st of August 2002
Two packages (cases) barcoded with ITF14
The expiry date of the product is to be marked on it's packaging
The second place to which the product is to be delivered is identified by GLN 3312345502000
The quantity to be delivered at this location is 24
The quantity should be delivered on the 15th of September 2002
The first place to which the product is to be delivered is identified by GLN 3312345501003
The quantity to be delivered at this location is 24
The quantity should be delivered on the 13th of September 2002
The product is subject to the standard VAT rate of 17.5 %
Message detail/summary separator
Count of the number of LIN segments in the message
Total number of segments in the message equals 39